



## RELEASE 22.8.4226

### **BUGFIX**

- *Fixed issue with recording searches: sometimes following a search for recordings, despite the recording being present the graphical "recording bars" were not shown in the clients*
- *Fixed drift of the Threads for Mobile and Server in case of sending many concurrent Connector events*
- *Fixed a latency problem in Omnia desktop GUI in case of modifications of remote layouts*
- *The multiple multi-server import has been added to the Native player, now it is possible to comfortably consult the video recordings "coming" from different servers by selecting channels from the device tree.*



## **RELEASE 22.7.4192**

### **BUGFIX**

- *Fixed problem in case of multiple video exportation from multiple servers, subfolders were grafted so the exported recordings were not correctly visible*
- *Fixed video exportation problem happening in case the camera name contained special characters (e.g. /, \, | etc ...), now exports do not fail*
- *The generation time of the VA+ event has been aligned to the one passed by the Open connector event, in this way the recorded is aligned to the instant of the event, before instead the recorded was shown at the instant of the event's arrival connector on the server.*

## **RELEASE 22.7.4180**

### **BUGFIX**

- *Fixed Omnia crash in case of login to servers in active layout patrol condition.*

## **RELEASE 22.7.4169**

### **BUGFIX**

- *Fixed several crashes in case of multiple event searches and frequent "openings" of events*
- *Fixed crash in case of interruption of audio playback, the problem occurred in case of layout change*
- *A mechanism has been implemented to increase the auto-delete speed of HLS recordings.*

## **RELEASE 22.7.4159**

### **BUGFIX**

- *Fixed crash in case of frequent layout switch: every time a layout change was made there was a small loss of memory and this, over time, led to the application crash.*
- *Fixed some problems related to Event Inhibition for VA + events*
- *Now the event notification of the Input triggered event (alarming peripherals video channel plugin) has been disabled in the case of a video channel without video analysis or without the "Generate event image (email / web / app)" checkbox, previously the sending was disabled only if the box "Generate event image (email/web/app)" was checked.*

## **RELEASE 22.7.4145**

### **EVENT INHIBITION**

The event inhibition feature (video channel – plugins – i/o) has been extended to all events including "VA +" and those provided by peripherals such as Bosch TASK and others.

### **BOLIDE OEM**

Updated the graphics for Bolide.

Added a new brand of cameras "Bolide" (it is an alias of ONVIF).

### **LIVE BUFFERING DEFAULT**

Introduced in Omnia the default of live buffering at 500ms



## **BUGFIX**

*2 problems related to the management of the RTSP stream have been fixed:*

- *The connection phase consists of a series of concurrent processes, but was managed without synchronisms. The RTSP protocol imposes very stringent rules on the choice of UDP ports to use, which, in the case of many video sources, caused the unsynchronized connection procedures to collapse, causing the rejection of all the ports and, consequently, the exhaustion of UDP Ports. This problem has been solved by introducing suitable synchronisms in the phase of multiple concurrent connections.*
- *The management of possible errors during the streaming phase (eg: connection failure, session setup failure, etc.) was structured in such a way as to cause a high number of disconnections even in the case of "slight" errors and, in some cases, a server crash. This management has been corrected to avoid the aforementioned crashes and to try to reduce forced disconnections on the server side.*
- *Fixed issues with the "Group" functionality (live – device tree)*
- *Fixed problem on the "Unknown error" dialog linked to events generated before 1970.*



## RELEASE 22.6.4115

### VIDEO CHANNELS WITH URL

Now you can specify a URL when configuring an ONVIF or Generic RTSP camera.

GENERIC-RTSP

Road

Enable Camera

Channel License: HYBRID

Mode:  IP  URL

IP/URL Address: 0 . 0 . 0 . 0

HTTP Port: 80

User\*:

Password\*:

Protocol\*: TCP

RTSP Port\*: 554

Main Stream

rtsp://<ip>/\*

rtsp://bac-mam.arteco.it:554/0/streamrtsp2

H264 320 x 240

Sub Stream

Enable Substream

rtsp://<ip>/-

ONVIF

Road

Enable Camera

Channel License: HYBRID

Mode:  IP  URL

IP/URL Address: bac-mam.arteco.it

HTTP Port: 9082

User: admin

Password: ●●●●●●●●

Protocol: TCP

Source: VideoSourceConfig-01-0

RTSP Port: 8552

PTZ

Advanced Profiles Configurations

Main Stream

Profile: WAVESsecondary

H264 640 x 360

7 fps 512 kbps

Sub Stream

Profile: Disabled

-

-

For RTSP channels it is possible to insert the RTSP string directly in the relative field. Also, now the data written in the RTSP string has higher priority than those in the above configuration.



## RELEASE 22.4.4095

### OPEN CONNECTOR EVENTS ON OMNIA WEB

From now on it will be possible to see and manage Open Connector events in a complete way on the Omnia Web client.

#### **BUGFIX**

- *Fixed an issue on ONVIF PTZ protocol that did not allow to pan/tilt/zoom cameras*
- *UDP/TCP port management problem solved*



## RELEASE 21.3.3001

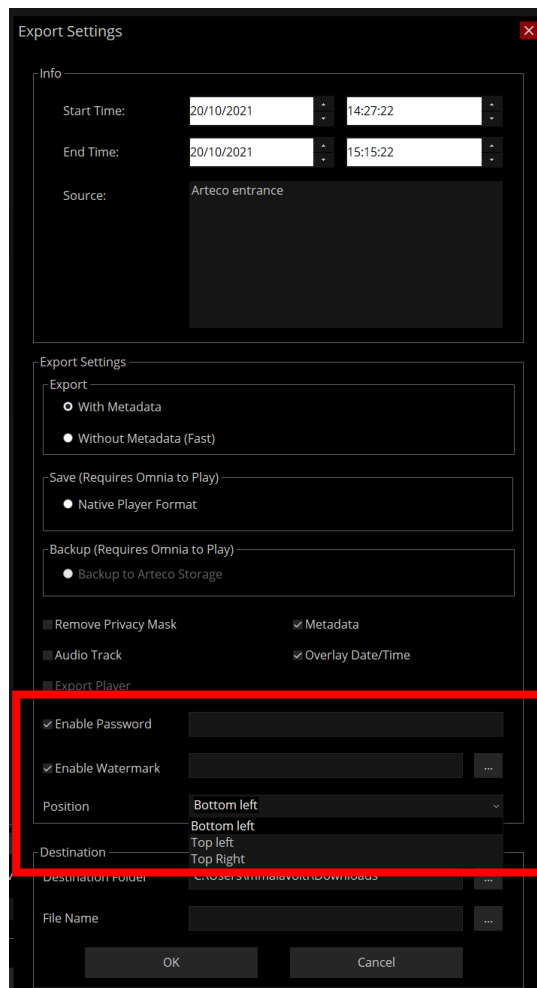
### EXPORT WITH PASSWORD AND WATERMARK

Now you can add a password and/or watermark (standard format image) to video exports:

- Native exports: password and logo
- Exports with Metadata: password and logo
- Exports without metadata: logo only

If the video will be exported with password, it will therefore be possible to open the exported file only after entering the set pw, from native player or media player.

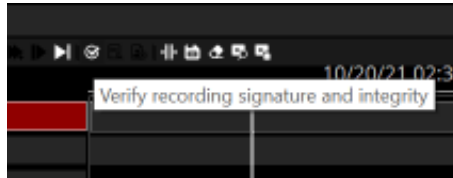
As for the watermark logo, the user can choose to place an image in standard format in one of the 3 corners of the image indicated (bottom right excluded to avoid overlays with timestamps).





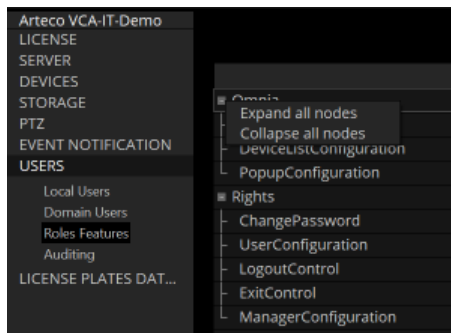
## VERIFY RECORDINGS LABEL

Change of button label that verifies the authenticity of the recordings.



## ROLES FEATURES

Introduced the right mouse button in the "Roles Features" list, the aim is to be able to expand/collapse all the elements in the list.



## BUGFIX

- *Fixed server-side and mobile-side crashes*



## **RELEASE 11.2.2656**

### **EVENT THUMBNAILS**

It has been changed the "logic" for saving images for events (and reading plates) by Arteco Server: Once everything was saved in the DB, while now the images are saved in a new "thumbnails" folder inside the Database, in the file-system.

The old images of the events will still be visible and will be retrieved from the DB, for the new ones we will refer to the "thumbnails" folder.

## **RELEASE 11.0.2568**

### ***BUGIFX***

- *Fixed server crash that was caused by CGI strings with particular characters.*
- *Fixed crash caused by an erroneous request to play an EDGE track of an AXIS camera.*
- *Fixed the problem related to the persistence of auditing events, an incorrect parameter was shown in the configuration*
- *Fixed NEXT crash on closing the "Event Properties" window.*





## **RELEASE 10.11.2567**

### **BUGFIX**

- *Fixed issue with scheduled notifications: now if you set a scheduled notification on a camera, it only affects the selected camera. Previously, the setting was erroneously "extended" to all cameras.*

## **RELEASE 10.11.2384**

### **BUGFIX**

- *Wisenet compatibility extended to the SPE-1610 model*
- *Fixed problem on Mobotix decoder that caused problems with the reverse playback*
- *Fixed issue on the Native player that prevented exportations in case of gaps in the recorded video around midnight.*
- *Fixed an issue that could cause a crash at the end of a recoded exportation made with the native player.*
- *Fixed a crash that could happen when using the reverse plaback.*
- *Fixed a bug that could cause the accelerated play to stop (16x/32x).*



## RELEASE 10.11.2361

### **BUGFIX**

- *Fixed a Next crash caused by double clicking on the awl of a camera in the connector view*
- *Resolved crash that could happen when searching for a recorded video*
- *Next deadlock fix*



## RELEASE 10.11.2353

### BUGFIX

- *Fixed some playback problems occurring on the Native Player*
- *Fixed deadlock on the smtp server configuration for emails*
- *Fixed problem that occurred when adding a domain user that caused a server crash*
- *Fixed problem related to the user password change*
- *Fixed a crash on Next Portable*
- *Improved refresh of the status of Bosch Task peripherals*
- *Improved Bosch Task license display, now it indicates correctly the system status even when peripherals are not reachable*
- *Fixed crash at server start related to a configured Bosch Task*
- *Corrected the automatic reset set for the External I/O in the event the state is "triggered" as an associated device*
- *Improved management of the MXPEG Mobotix decoder*
- *Widespread improvement of event search and recordings:*
  - *Results come faster and it is faster to clean up the data for a new search*
  - *the progress-bar is more precise and gives the expected results even from several servers*
  - *in case of an excessive number of events to show in the Event Log (> 5000), the most recent ones are selected, regardless of the origin server.*
- *The display of the recording "bars" related to continuous recordings in native export searches has been improved*
- *Fixed a problem on the playback of an event: the right event was opened but the recorded one might be referred to another previously opened event*
- *Fixed a deadlock on SmartSearch*
- *Fixed some crashes that could happen during the Arteco Server process shutdown*
- *Fixed problems with videowall controls to bring layouts to the front*
- *Fixed the bug where an export was performed by entering the file name, but the file could not be found in any folder*
- *Fixed some problems on the player when increasing and decreasing the playback speed*
- *Removed Wanco telemetry and everything related to Wanco*
- *Fixed the ONVIF-G request for the replay of remote tracks: tested both on NVR HIKVISION, on BOSCH with Edge-SD and on Wisenet Hanwha with Edge-SD*
- *Introduced a new message for the user in case of missing or partial video exportation*
- *Removed the Chat Audio for communication between Next and Server*
- *Removed SMS notification*
- *Fixed updating in real time of peripherals in the Event Properties panel. Note: now the status of the peripherals has changed its position on the interface, it is located above the notes section.*



## RELEASE 10.11.2311

### **BUGFIX**

- *Fixed: "Ghost layout" problem when logging out of a server while viewing a remote layout.*
- *Added the ability not to perform and view the search for remote ONVIF recordings for NVRs*
- *The "Play in time UTC" parameter has been added to the interface to search for remote ONVIF recordings for the NVRs. This parameter could be required for some devices.*
- *Removed audio support for analog cameras*
- *Removed support for Polish and German languages*
- *Fixed problem that occurred when disabling the secondary stream in ONVIF profiles while it was set as a live profile on the layout: the channel was restarted continuously*
- *Fixed a problem on video playback when in the transition from pause to play: the play did not restart*
- *Fixed the redraw of the focus frame (green border on the selected view) in the views containing maps and devices*
- *Fixed a problem on the digital zoom from the toolbar curtain.*
- *Corrected a problem related to the start of the video analysis in case of enabling of the Enabling / Disabling Input plugins, Concatenated I / O and Associated I / O.*
- *Fixed a problem on the Boost export starting from a native export with the Privacy area: it was not possible to perform the Boost export.*
- *Fixed an issue on refreshing the status of an Everywhere in case it goes offline: it is now displayed correctly*



## RELEASE 10.10.2285

### **BUGFIX**

- *Removed Axis A1001 peripherals from the next and from the server, they will not be managed even for old servers*
- *Fixed incorrect deletion of events while deleting an edge backup track*
- *Fixed a problem with the display of cameras having the same name in the browser*
- *Fixed an issue on the list of auditing events for domain users*
- *Fixed some bugs that could cause Server crash*
- *Fixed a next crash caused by a problem in the configuration framework of ONVIF profiles*
- *The field containing the none of the ONVIF sources connected to the profiles has been enlarged*
- *Fixed an issue with the management of the video export progress bar*
- *Fixed a problem with the design of the browser bars in the case of NVR channels*



## RELEASE 10.10.2281

### NEW AUDITING FEATURES

Added new event types that will be tracked in the Auditing section

- Enable/Disable video channel
- Enable/disable camera plugin
- Enable/disable camera plugin scheduler

Plugins affected:

1. Abandoned/Removed Object
2. Violated Area
3. Privacy blur filter
4. Area Exclusion
5. Perspective

Plugins NOT affected:

1. LPR
2. I/O Event generation
3. I/O Enabling control
4. Chained I/O

### BUGFIX

- *Next: fixed issues related to buttons "skip to next event" and "skip to previous event"*
- *Next: fixed issue related to the SmartSearch in the Roles Features section*
- *Server: Fixed problem with NVR HIKVISION related to the use of "summer time" time zone*
- *Server: Improved the playback start time calculation when it was asked to play a remote track on the NVR*
- *Next: Removed the menu "Notification scheduler" for Servers with older software versions. The feature is available only with Servers having version 10.9.2268 or latest.*



## RELEASE 10.9.2268

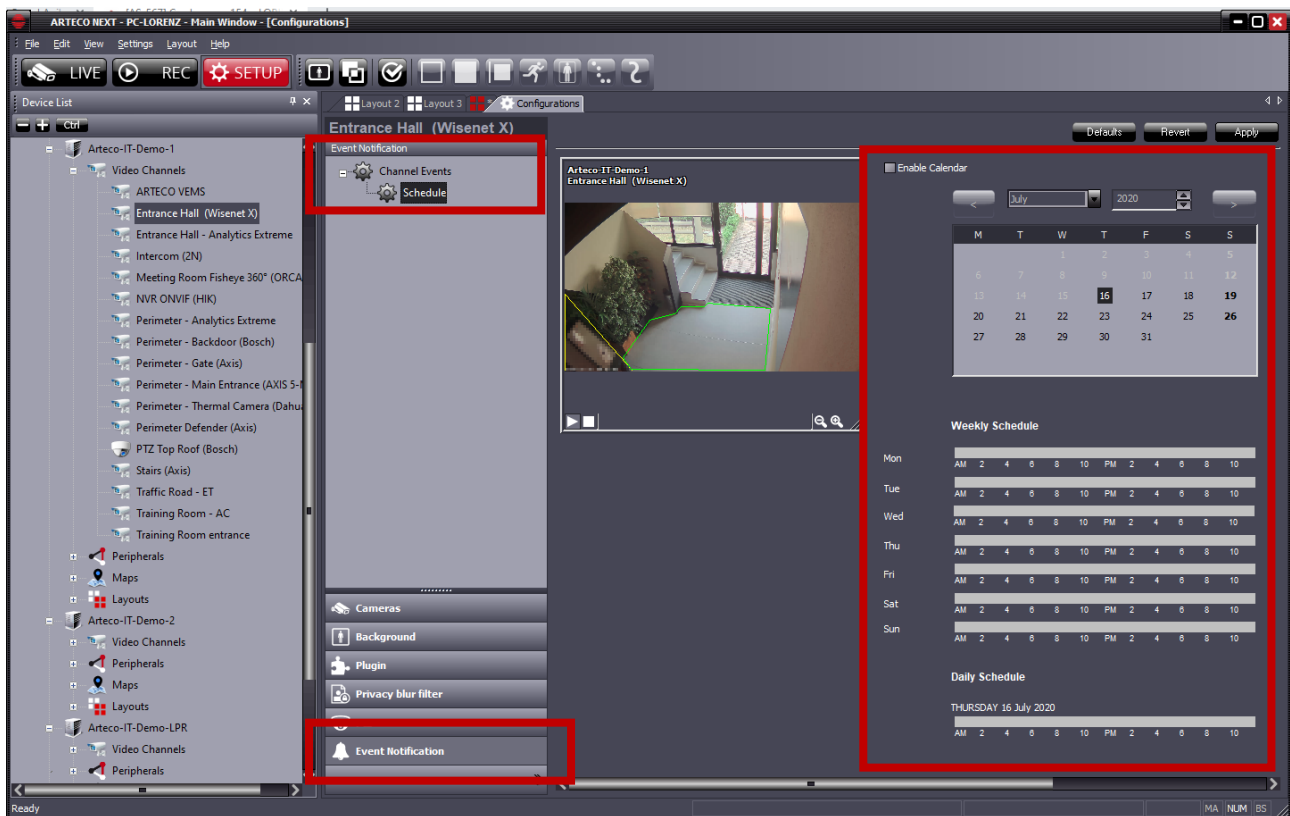
### EVENT NOTIFICATIONS SCHEDULER

We added the possibility to schedule the Event notifications. This feature is based on the Schedule calendar already available for other features, and allows the administrator to decide when to view/receive notifications and when to "silence" them instead.

**IMPORTANT:** If the notifications are silenced, those will still be recorded in the database and therefore it will be possible to search for them later in the recording environment. It is therefore a muting, which in any case will allow operators and administrators to search for events that have not been notified.

### NOTES

1. It will not be possible to set diversified schedules, or activate / deactivate calendars for a single notification (log, app, output ...). The scheduling of the calendar will have an impact on all the notification methods provided for the device.
2. The Event notifications scheduler is available for devices in the video channel section and peripherals, but not for server events.
3. It is possible to use the Multiple selection (of devices of the same type) to configure the Event notification scheduler.



## RELEASE 10.8.2267

### BUGFIX

- Fixed a memory drift by modifying the cleaning procedure at night.





## **RELEASE 10.7.2265**

### **NVR EDGE RECORDINGS ACCESS**

We added the possibility of accessing and exporting the tracks recorded on remote support (Edge recordings) of the NVR Onvif compliant, directly from Arteco NEXT.

The Arteco platform, already able to receive live audio / video streams from these devices, also allows you to manage the recordings on the NVR, using Onvif protocols. Thanks to this new functionality of the ARTECO VMS, it therefore becomes possible:

1. search for the recordings stored on the NVR
2. view and play the EDGE NVR track in the Arteco-NEXT browser
3. automatic import and consolidation of EDGE NVR tracks in Server recordings (cable disconnected - automatic edge retrieval)
4. manually import and consolidate EDGE registrations in Arteco Server registrations
5. export directly to the client pc the EDGE trace present on the NVR device

A peculiarity that can be highly appreciated by those who want to manage these systems remotely, but do not have a high performance connection between the Arteco VMS and the recorder, is the possibility of doing all of



this described in point 1) even in "channel" conditions. off "on the Arteco VMS, thanks to the" video inhibition "function.

We will shortly provide as comprehensive a list of compatible NVRs as possible. However, it will be a list that is continuously updated.

## I/O CONVERTED INTO PERIPHERALS

Following the introduction of the Peripherals section, and at the same time the less and less frequent use of the I/O devices, it was decided to eliminate the I/O section from future releases.

In case of version update, some I/O devices will be automatically converted into Peripherals.

Some others, see table below, will be permanently eliminated and consequently not converted.

IO DEVICE	PERIPHERAL
Arteco Serial	Not converted
Axis I/O	Converted in AXIS I/O in the peripheral section
Virtual	Converted to External IO with any extensions Neither the calendar nor the default state of the virtual* variable will be converted
Mobotix	Not converted
Samsung	Converted in "Samsung I/O" in the peripheral section
Arteco Ethernet Remote	Arteco Everywhere (default states will not be converted)
CIAS I/O	Not converted
Smart IP Controller	Arteco Everywhere (default states will not be converted)
Arteco Everywhere	Arteco Everywhere (default states will not be converted)

### Note

- 1) No notification settings are converted when switching from I / O to Peripheral. In particular, associations are lost if the I / O were defined in the notifications of:
  - Peripherals
  - Cameras
  - Server
- 2) I/O Default States have not been converted
- 3) The Pushpins on the Maps have not been converted
- 4) The Output Pin for all Plugins have not been converted (violated area and abandoned / removed object)
- 5) Output calendars have not been converted
- 6) The I / O pins associated with the PTZ presets have not been converted to Peripheral

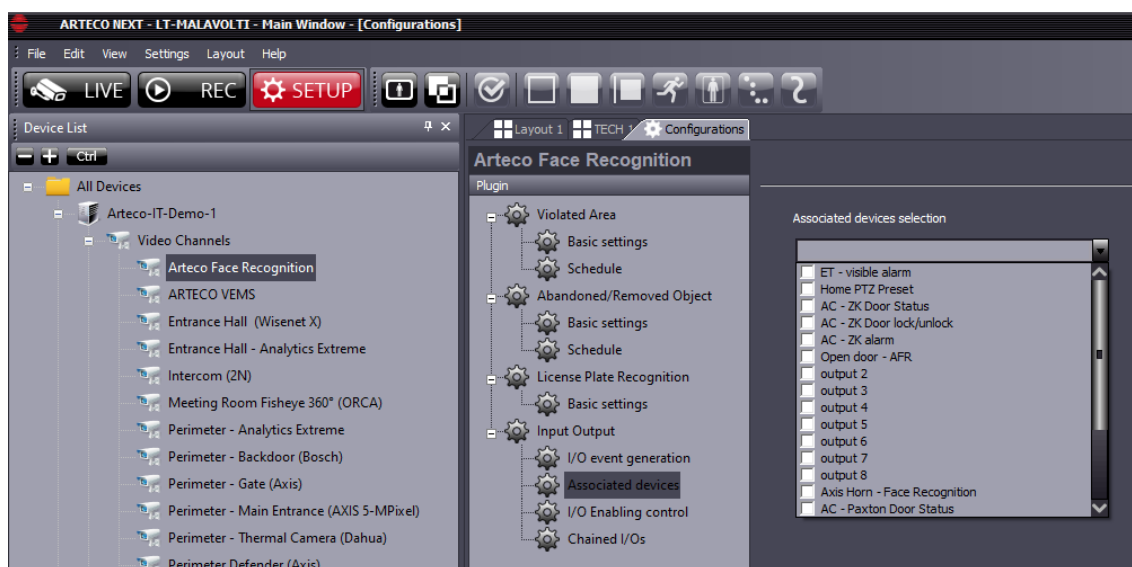
Where possible, the references that the cameras have in the Input Output Plugin section (Event generation/ Enabling control and Chained) have also been converted.



Exceptions are the old Linked I/O associated with video analysis plugins whose association has not been converted because it has been implemented as described in the next point ("Associated I / O Plugin Creation").

## ASSOCIATED DEVICES

The "Associated devices" plugin has been created, which allows you to associate a Peripheral (output) to a Camera and to control its status from live with the right button shortcut -> associated device.



This feature is available for ARTECO NEXT and will also be implemented soon on Web Access and App.

## LOCATE DEVICE

A new function is now available to locate on the ARTECO NEXT device tree a device starting from the visualization of the object on a map or on Open Connector. Right clicking and selecting "Locate device" the selection on the tree moves to the pointed device.

## BUGFIX

- *NEXT: now the label numbers of the "External States" device are consistent*
- *SERVER: the search filter in the Database has been restored to obtain the events associated with the cameras only*
- *SERVER: a malfunction in the removal of an ONVIF camera has been corrected*
- *SERVER: fixed a malfunction in the stamp maker that occurred when the resolution of the substream of a camera was high*
- *SERVER: fixed a malfunction that could occur while writing an Auditing event*
- *SERVER: a problem that could occur during the search for events in the Event Log panel has been resolved (the colors were not shown correctly)*



- *SERVER: a defect in the lack of visualization of the representation bars of the recordings has been corrected*
- *SERVER: now writing events to the Database correctly reports the result of the operation*
- *SERVER: The periodic cleaning of the Registration Sessions (PurgeSessions) has been temporarily disabled as it could cause an overload.*
- *SERVER: Corrected a problem on the duplication in configuration of the "cleaning / schedule" node of the peripherals.*
- *SERVER: Resolved a resource allocation problem in the DB that caused event queries to fail.*

## **RELEASE 10.5.2243**

### **MOBILE DIGEST**

Introduced the DIGEST mode for encrypted login for iOS, Android and web access applications

### **BUGFIX**

- *Fixed crash of NEXT on autologin from concurrent clients with the same user from different locations. Now if the forced logout occurs, the Next interrupts the autologin: the automatic login is disabled, for the server in question, until the next restart of the NEXT client.*
- *Corrected problem in case of expired Registration-code as the NEXT did not allow any operation on the server.*
- *Fixed problem on the dewarping with adaptive resolution set. Switching from the secondary to the primary and vice versa the view settings are now reset every time to allow proper operation of the dewarp. The correction on the dewarp has been extended to the case in which the profile is reset from the context menu.*



## **RELEASE 10.3.2212**

### **LPR SNAPSHOTS ON DB**

We implemented a new way of storing LPR snapshots. While once a "snapshots" sub-folder was created in the path of the camera recordings, vice versa now the image is saved in the DB.

### **SNAPSHOT EVENT PREVIEW (OMNIA)**

If the live snapshots profile is active on the camera, every time a video event of a camera is created, the snapshot is saved in the DB.

This image can be recovered only with the Omnia project and not with the current Next.

### ***IMPORTANT NOTE***



*The numbering of the software versions has been changed: the first number is progressive and linked to the year, the second number is linked to the introduction of new features. The information of the Quarter has been eliminated, from now it won't be available anymore.*

## **RELEASE 10.0.1.2209**

### **BUGFIX**

- *Fixed problem on native export which did not allow to export the auxiliary recording track: when doing so the main track was provided instead.*
- *Fixed problem on contextual menu of live profiles introduced with the TURN ON VISUAL DETAILS feature: it was not possible to change the default profile in live.*
- *Fixed server crash problem when closing RTSP stream channels having failures.*



## **RELEASE 10.0.1.2202**

### **SHOW LICENSE EXPIRE DATE**

The SERVER INFO page from the SETUP menu of the NEXT now displays also the expiration date of the server license

### **TURN ON VISUAL DETAILS**

Added a command to the context menu of the live views to enable or disable commands for displaying all the details of the Arteco analysis.

### **VIRTUAL MACHINE LICENSE UNLOCK**

Removed the license constraint on hardware keys for servers installed on virtual machines. Upon authorization from the Management, production can issue licenses for virtual machines.



## **ARTECO CONSOLE UPDATED**

Updated the Console with new features and new shortcuts useful for support and troubleshooting

### **BUGFIX**

- *fixed a problem related to the conversion of recordings from Firebird to MariaDB for network paths (eg NAS).*

## **RELEASE 10.0.0.2197**

### **EVENT DB RETENTION**

The deletion of video events from the DB is carried out on the basis of a specific and configurable retention, with a dedicated procedure, different from the cancellation of the video. In this way, the archiving of channel events has been aligned to the management of all other types of events. Once a day the cleaning operation will be performed and events older than the retention value will be deleted from the DB.

### **BUGFIX**

- *Fixed an issue that could prevent successful database creation on startup. This version corrects any errors generated by previous versions.*
- *A new DB error checking procedure has been introduced: if non-repairable errors are detected, the server documents the error in the LOG file and stops to avoid data loss*
- *The database conversion process has been speeded up and some conversion bugs have been fixed.*





## **RELEASE 9.3.3.2168**

### **DB CONVERTER**

The video archive acquisition phases and previous events have been optimized in case of updating a server with old database: now the process takes place in significantly shorter times.

### **OC ROI ADAPTATION TO BOUNDING BOX**

Any ROIs contained in an Open Connector event have been compared to the bounding boxes produced by ARTECO video analysis, and are now processed in the same way:

- 1) have been integrated into the flow of metadata produced by video analysis and are saved in the same way as the the bounding boxes produced by standard Arteco analysis to ensure that they are reproduced by the player in the same way
- 2) a violated area event will be generated, containing information related to the Connector that produced the event in the description field. The event is "centered" on the time interval covered by the ROI flow



and the event play displays all the metadata associated with the latter, similarly to what occurs during the playback of any event.

The generation of the video event and therefore the possibility of inserting it in the Smart Search searches requires the appropriate license.

### **BUGFIX**

- *Fixed a refresh issue in the Open Connector configuration GUI*
- *Fixed problems related to configuration and sending of custom commands for the Open Connector.*

## **RELEASE 9.3.2.2132**

### **VIDEOWALL – FRONT LAYOUT CONTROL**

With this feature, we allow an "A" client to control the display of layouts on a "B" client, or, more in detail, ensure that a "A" client can bring a layout to the forefront of another "B" client shared remote on one of the windows opened by client "B".

Through the "device properties" panel of a shared remote layout, we introduced a set of controls that allow to carry out the above operation on one of the current clients logged on to a given server. The client of the operator who sends the request must obviously belong to this group of clients.



Informazione Layout:

Server: DCAV [localhost:7000]

Nome:

ID: 6

Tipo:

Dispositivi Assoc

D-Link 5.17  
Input External State 01  
Input External State 02

1	2	3	4
5	6	7	8

Visualizza sulla postazione:

PCAdmin

Nella finestra:

Faenza Centro

Porta in primo piano

1) Client station selection

2) Window selection

3) Confirm

The client will be selected using a combo-box containing the list of client stations logged onto the server. **As a consequence, it will be possible to send the request to only one client at a time.**

Then, it will be possible to populate a specific window of that client station.

## Notes

- Currently, if the "Device properties" panel is not visible, it can be opened using the command View -> panels -> device properties of the main menu: in order to simplify these operations, this command will be added with a right mouse button on a device and, in the specific case, on the Shared Layout.
- Starting from now, the "Device properties" panel will be active for all hierarchical levels, so also Users will be enabled to perform drag & drop of a layout.
- An important aspect not to be underestimated concerns the sending of this command to windows where the active environment is SETUP or REC: the NEXT will prevent the movement of a layout on a window where one of these environments is active.



- A final aspect concerns the interaction of this command with the PATROL and POPUP settings: no specific limitations will be introduced even if the combination of popups or patrols with the video wall must be avoided.
- As for the license, nothing will be changed: everything will be available with the videowall license of already existing shared layouts.
- To facilitate the selection operations, clients will be offered the possibility of acquiring a more precise identity, or rather of a descriptive name similar to that which can be assigned to the servers, thus assuming the actual role of stations. If the administrator does not assign the name, the default PC and window names (Windows name of the host PC and "MAIN WINDOW" for the main window and "WINDOW 1", "WINDOW 2", ... "WINDOW N" for secondary windows)

## **RELEASE 9.3.0.2126**

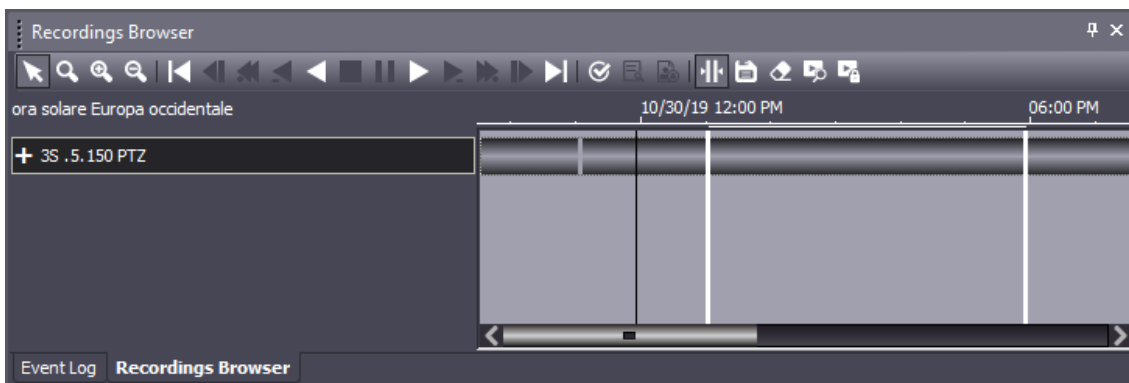
### **RECORDINGS PROTECTION**


The Recordings Protection function allows you to protect parts of recordings from self-deletion. Then, any Protected recordings will be deletable only manually.

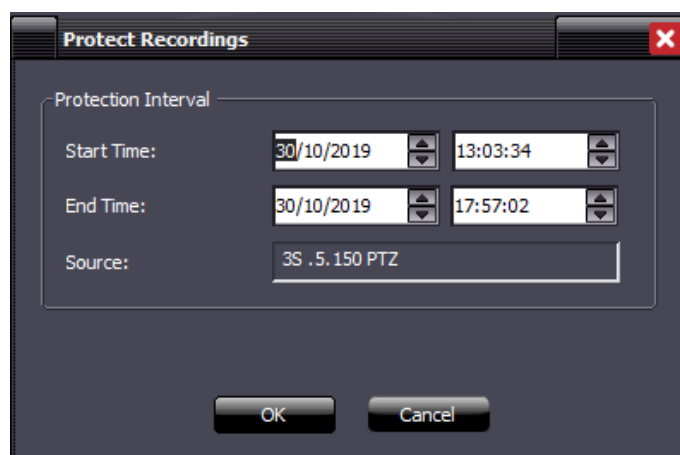
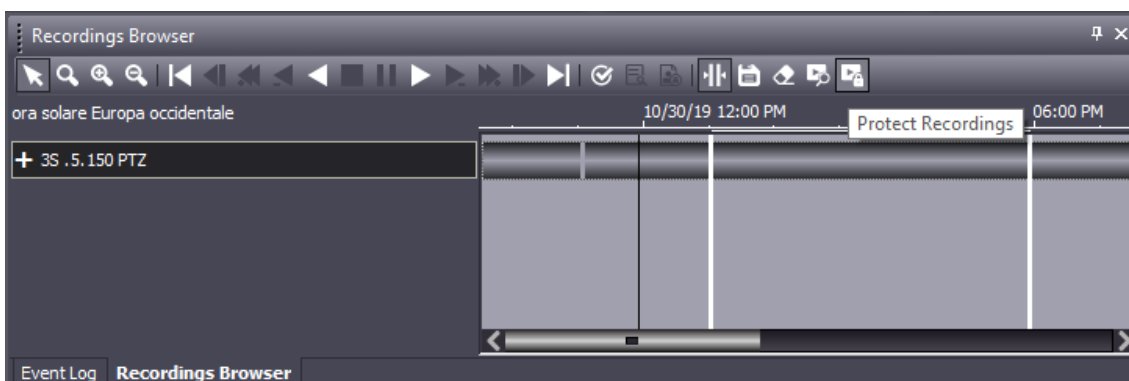
This feature is available by using a new button in the Recording Browser bar. This Button will appear only if a single camera is selected and if the user is enabled for the "Export Recording" rule (default for administrator and power user).



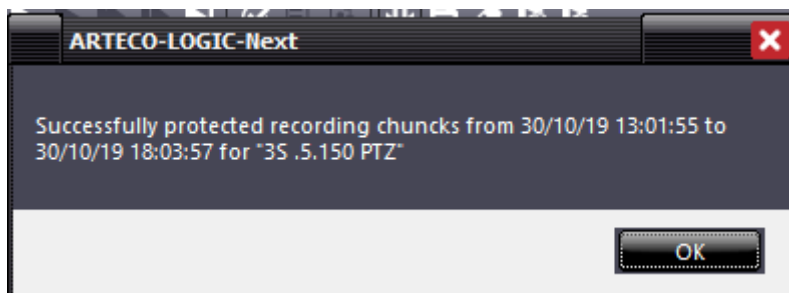
Below is an example of selecting a portion of Registration:



As soon as a part of the recording will be determined, through the button  will be possible to protect the recorded video.



Once you have pressed "ok" the protection procedure will be started and this will result in a final message highlighting the initial and final instant of the protected recording.



The protection of a portion of the recording will be at the level of the single ".eye" file. This means that, if you select a recording portion for protection, the actual protection will be a larger section (or at most equal), since it depends on the size of the file or files that belong to the interval selected by the user.

Following the protection operation there will be no way to highlight the protected parts. To be able to eliminate the protection it will be necessary to delete the recordings using the "delete registration" button.

As a corollary of the project, the self-cancellation function is eliminated, which we believe is no longer necessary and useful.

Paths	PathId	Types	Total Size (GB)	Assigned Space (GB)	Allocated Space (GB)	Channels	Defau...	Reversible Errors Fallover
D:\rec-aux\	d:2	AUX	1769	255	255	15	NO	YES
C:\programdata\arteco-server\data\rec\	c:2	DATA	884	200	0	0	YES	YES
D:\recording\	d:0	DATA	1769	1000	999	8	NO	YES
E:\recording\	e:0	DATA	1769	1000	999	7	NO	YES
D:\spare\	d:1	SPARE	1769	500	0	0	NO	YES
E:\spare\	e:1	SPARE	1769	500	0	0	NO	YES

Sources	PathId	Delete Type	Assigned Space [GB]	Rec. Enabled	AutoDelete	AutoDelete By Days	Days
<input checked="" type="checkbox"/> Artec Face Recognition	d:2	AUTO	17	YES	YES	NO	0
<input checked="" type="checkbox"/> ARTECO VEMS	d:2	AUTO	17	YES	YES	NO	0
<input checked="" type="checkbox"/> Entrance Hall (Wisenet X)	d:2	AUTO	17	YES	YES	NO	0
<input checked="" type="checkbox"/> Entrance Hall - Analytics Extreme	d:2	AUTO	17	YES	YES	NO	0
<input checked="" type="checkbox"/> Intercom (2N)	d:2	AUTO	17	YES	YES	NO	0
<input checked="" type="checkbox"/> Meeting Room Fisheye 360° (ORCA)	d:2	AUTO	17	YES	YES	NO	0
<input checked="" type="checkbox"/> Perimeter - Analytics Extreme	d:2	AUTO	17	YES	YES	NO	0
<input checked="" type="checkbox"/> Perimeter - Backdoor (Bosch)	d:2	AUTO	17	YES	YES	NO	0
<input checked="" type="checkbox"/> Perimeter - Gate (Axis)	d:2	AUTO	17	YES	YES	NO	0
<input checked="" type="checkbox"/> Perimeter - Main Entrance (AXIS 5-MPixel)	d:2	AUTO	17	YES	YES	NO	0
<input checked="" type="checkbox"/> Perimeter Defender (Axis)	d:2	AUTO	17	YES	YES	NO	0
<input checked="" type="checkbox"/> PTZ Top Roof (Bosch)	d:2	AUTO	17	YES	YES	NO	0
<input checked="" type="checkbox"/> Stairs (Axis)	d:2	AUTO	17	YES	YES	NO	0
<input checked="" type="checkbox"/> Traffic Road - ET	d:2	AUTO	17	YES	YES	NO	0
<input checked="" type="checkbox"/> Training Room - AC	d:2	AUTO	17	YES	YES	NO	0

## BUGFIX

- It is now possible to connect to Onvif cameras configured accessible via internet and configured on different sub-networks
- Resolved issues related to excessive consumption of resources when managing IP video sources with H.265 encoder
- Fixed some incompatibility problems of Wisent PTZ (PNM-9320VQP) configured as Onvif
- Correction of the label related to the Smart Search search result
- Fixed problems installing the 32bit SDK. Remember that the SDK package is 64bit but can be installed at 32bit depending on what the customer decides.
- Added messages to the video export report dialog: these messages show the export fps deriving from the recorded flow. Below 10fps there could be export problems.
- Fixed a error handling in the SmartSearch
- Fixed a problem on using the 32bit Next installed with the 32bit server suite.



- *Fixed a problem related to disconnection of a view on the layout, which was un-removable if the server was offline.*
- *Fixed a software conflict that could occur between the layout Patrol and the Popup mode. Now it is no longer possible to activate Patrol and Popup on the same window.*

**NOTE:**

**Our Software Suite as well as Arteco NEXT is compatible only with Windows 64-bit operating system**

**In order to grant compliancy towards analog frame-grabber cards, it is allowed to install the 32bit package "Arteco Suite X86" on native 64bit OS only as detailed in the list below**

**OS**

Windows 10; Windows 8.1; Windows 8; Windows 7 Service Pack 1; Windows Server 2016; Windows Server 2012; Windows Server 2008 R2 SP1; Windows Server 2008 Service Pack 2

**HW REQUIREMENTS**

- RAM: 8GB or higher
- CPU: i3 or higher
- HDD: at least 10GB available, 7200 RPM and minimum throughput 80MB/s

## **RELEASE 9.2.0.2110**

### **SMART SEARCH**

The Smart Search feature consists of being able to search for and view events that occurred in a portion of recorded video, within a defined area.

- **The Smart Search is based on the Arteco video analysis (Violated Area and Removed/Abandoned Object),** whose information is stored in the main recording stream, this means that **you can have the Smart Search only for those channels where the "video analysis" was enabled** in the selected period.
- The events that the Smart Search can identify are the same as those generated by the "Violate Area" and "Abandoned / Removed Object" plugin: **the search result will show a subset of the events saved in the DB** based on the area drawn.



- It is therefore important to use the plugin filters well in order to find the most interesting events. This could on the one hand create a greater number of "false events" but could be useful for using the Smart Search.
- The greater the surface of the image covered by the analysis area, the greater the possibility of obtaining results with the definition of any Smart Search area.
  - If the area covers the whole image I will get valid Smart results whatever the rectangle used.
  - Vice-versa, if the analysis area covers only half of the image I will get Smart results only if the Smart rectangle covers at least part of the analysis.

This second scenario is useful if we have to analyze only a portion of the image with the Smart Search: in this case it does not make sense to perform the analysis on the whole image, indeed it is more correct to do it only on the area of interest. Think of a fence near a motorway continuously traveled by vehicles, and you need to detect intrusions by people. In this case it is useful to define a sensitive Violated Area only on the fence because this helps to reduce the number of events generated and written in the DB.

It is also true that, in this way, if I apply the Smart Search to the motorway **area I would not get any result.**

#### **Important note:**

It may happen that expanding the sensitive area of motion can be many events generated by the plugins. To avoid this inconvenience it is advisable to disable notifications of events generated by the plugins.

#### **License**

The Smart Search feature is available for eMotion, Active and Extreme licenses. The license applies to the Server, this means that you can perform the Smart Search on all the cameras of a licensed server (as long as the Violated Area or Object Removed / Abandoned plug-ins are enabled on these).

Clearly, given the "limits" of the eMotion analysis filters, the Smart Search will be less efficient on this type of channel.

**It is not possible to have the Smart Search for LPR channels** as the Violated Area and Abandoned/Removed Object Control plugins are disabled.

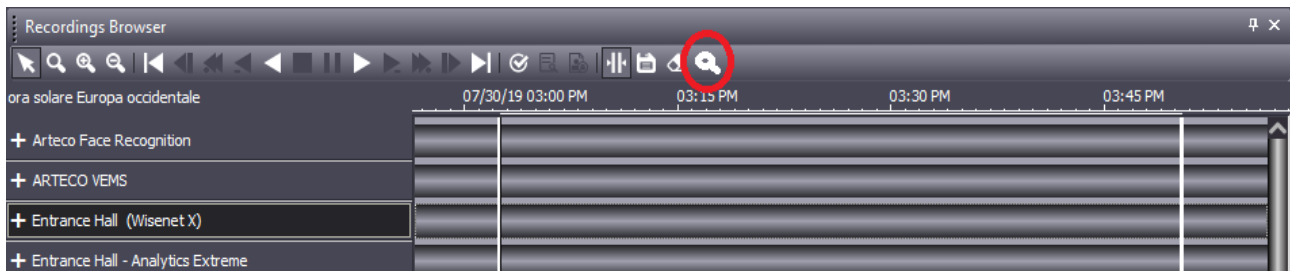
#### **USING SMART SEARCH**

Smart Search **can only be performed on one camera at a time.**

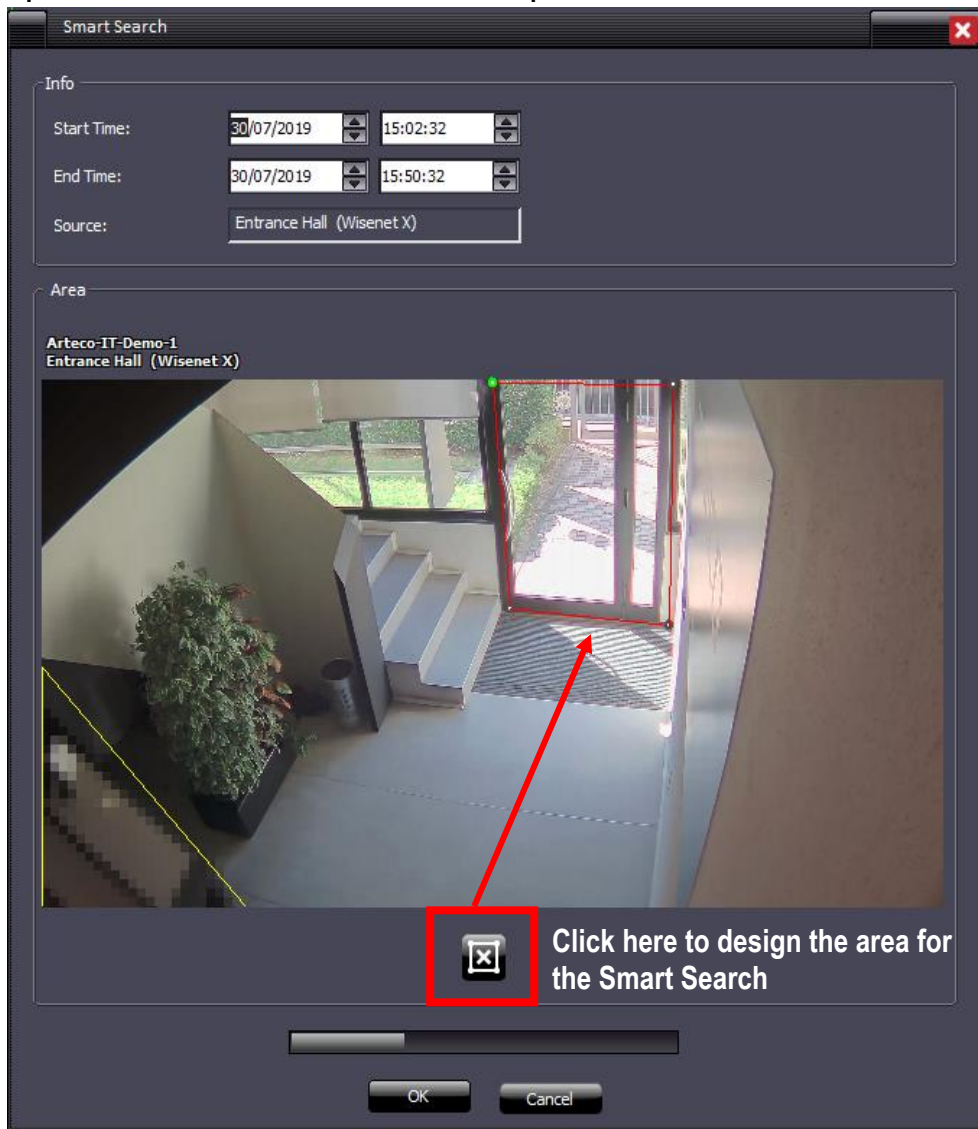
It will therefore be necessary to be in the RECORDINGS environment and search for recordings based on the time frame required. After that:

1. Select a camera
2. Select the time interval (using the time bar activation button, as for the export)
3. Click on the highlighted button





A screen will open that will allow the user to set an area to perform the search afterwards



Click OK once the Smart Search Area has been defined. As seen in the image above, a progress-bar appears identifying the time required for the search.

- The Progress bar will only be visible when the OK button is pressed.
- The Cancel button is always visible, and allows you to cancel the start of a search or the search itself.

The results of the research will populate the "Event Log" \* panel. You will need to double click on the desired event to start the recording playback.



*\*if not in the foreground (the graphic browser is shown by default), this panel should be selected to be displayed.*

## **CAMERA MANAGEMENT**

Now the Wisenet PNM-9320VQP is supported

### **NOTE:**

**Our Software Suite as well as Arteco NEXT is compatible only with Windows 64-bit operating system**

**In order to grant compliancy towards analog frame-grabber cards, it is allowed to install the 32bit package "Arteco Suite X86" on native 64bit OS only as detailed in the list below**

### **OS**

Windows 10; Windows 8.1; Windows 8; Windows 7 Service Pack 1; Windows Server 2016; Windows Server 2012; Windows Server 2008 R2 SP1; Windows Server 2008 Service Pack 2

### **HW REQUIREMENTS**

- RAM: 8GB or higher
- CPU: i3 or higher
- HDD: at least 10GB available, 7200 RPM and minimum throughput 80MB/s

## **RELEASE 9.2.0.2110**

### **NOTE:**

**Our Software Suite as well as Arteco NEXT is compatible only with Windows 64-bit operating system**

**In order to grant compliancy towards analog frame-grabber cards, it is allowed to install the 32bit package "Arteco Suite X86" on native 64bit OS only as detailed in the list below**



## **OS**

Windows 10; Windows 8.1; Windows 8; Windows 7 Service Pack 1; Windows Server 2016; Windows Server 2012; Windows Server 2008 R2 SP1; Windows Server 2008 Service Pack 2

## **HW REQUIREMENTS**

- RAM: 8GB or higher
- CPU: i3 or higher
- HDD: at least 10GB available, 7200 RPM and minimum throughput 80MB/s

## **RELEASE 9.1.1.2102**

### ***BUGFIX***

- *Fixed problem with changing existing username*
- *Fixed Onvif problem related to old generation cameras*
- *Fixed problem on cancellation of auxiliary routes*
- *Fixed problem with connection to Bosch Task and Wisenet I/O devices*



- Resolved the management of the error message in the DB conversion in first installation
- Update system information on VC runtime installation
- Fixed a deadlock on the initialization of the following devices: Wisenet I/O, Bosch I/O, Bosch Task.
- Fixed a problem displaying the timeline on gray bars in the recording browser
- Fixed problem on the ArtecoMobile smart app to connect to multiple servers with the same public IP
- Improved behavior of advanced configuration in the Onvif Panel
- Fixed problems that prevented the use of the application on devices with Android 9.0
- Resolved issues with stretched images on WebAccess
- Fixed the installation package, now the http port is correctly defined

**NOTE:**

**Our Software Suite as well as Arteco NEXT is compatible only with Windows 64-bit operating system**

**In order to grant compliancy towards analog frame-grabber cards, it is allowed to install the 32bit package "Arteco Suite X86" on native 64bit OS only as detailed in the list below**

**OS**

Windows 10; Windows 8.1; Windows 8; Windows 7 Service Pack 1; Windows Server 2016; Windows Server 2012; Windows Server 2008 R2 SP1; Windows Server 2008 Service Pack 2

**HW REQUIREMENTS**

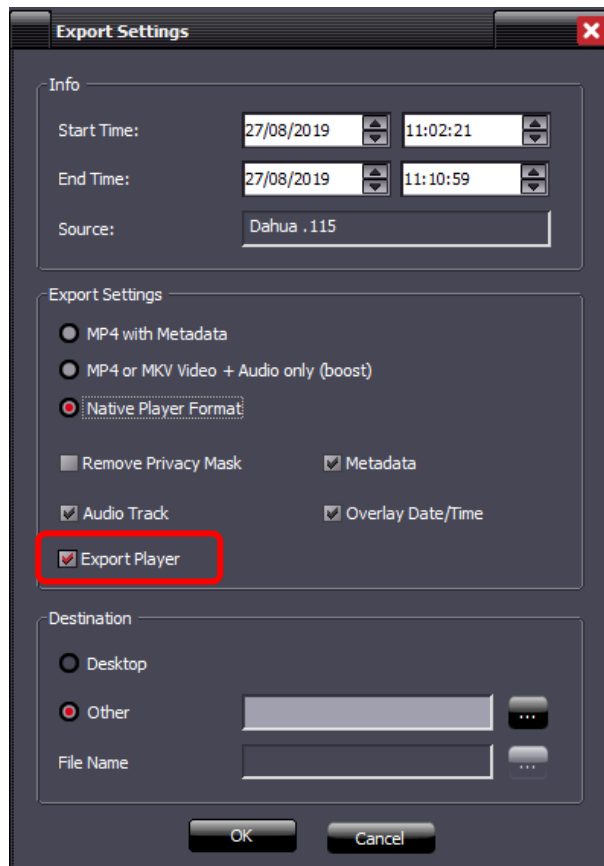
- RAM: 8GB or higher
- CPU: i3 or higher
- HDD: at least 10GB available, 7200 RPM and minimum throughput 80MB/s

**RELEASE 9.1.1.2080**

**NEXT PORTABLE**

Implementation of the client in "executable" mode, to open the exported recordings in Native format.

At the time of exportation, you can also decide to export NEXT Portable.



An "Export" folder will be created, with the registrations inside and the connection to the client.

The client starts in this mode only if opened by the link in the Export folder, since it contains the "-external-player" parameter inside it. At startup, the NEXT Portable will prompt you directly on the Recordings page, find the automatically exported recordings and also search for them in the period from the beginning of the oldest recordings to the end of the most recent recording.

From now on, even exporting only the recordings, they will be encapsulated in two named folders \Export\recordings.

## ONVIF PROFILE G

Introduced the support for the G profile of Onvif, which introduces the possibility of managing the recordings that may be stored on the cameras (edge recordings).

A screenshot of the Arteco recording settings interface. The interface is dark-themed and contains several configuration options. At the top, there is a checked checkbox for "Enable Recording". Below this are dropdown menus for "Codec" (set to "Main H.264") and "Codec Resolution" (set to "1920 x 1080"). There are two sliders: "Continuous/ Pre-Event Frame Rate" set to 25 and "Quality" set to 4. A checkbox for "Show Machine ID and Timestamp" is unchecked. Below that, there are two checked checkboxes: "Record audio track" and "Retrieve Edge Recording\*", which is highlighted with a red rectangular box. At the bottom, there is an "Event Settings" section with input fields for "Pre-Event Recording (sec.)" and "Post-Event Recording (sec.)", both set to 3, and a "Post-Event Frame Rate" slider set to 25.

## APACHE

Web Server Apache has been updated to the last version (2.4.39).

## ARTECO MOBILE – ARTECO APPS

Thanks to the update, now it is allowed the identification of Servers with the same IP but on different ports.

## RETENTION OF SERVER EVENTS

Retention for server events introduced.

## DOUBLE PASSWORD

Implemented double password management with the introduction of a new management of export parameters:

- the BOOST export authorization is now linked to the permission to remove the privacy zones
- Users and Power User and user type can now export Native recordings, after entering Supervisor credentials. The Supervisor user is defined in the user configuration section.



When entering the Recordings environment, if the user is a "power user" or "user", he will be asked to enter credentials for a Supervisor user. This step is not mandatory, in case these will not be inserted users and power users will be able to do their jobs, but without the possibility to export video in Native format.

In any case, it will be necessary to enter the credentials of a different Supervisor user other than the one who is accessing (security layer required by GDPR privacy regulations).

## BUGFIX

- *Modified the composition of the cookie for mobile sessions: now the cookie also contains the codename of the server.*
- *Database update management. Before installation, the necessary patches for the update are now installed, and the database now has a "version number" which is checked at startup.*
- *Fixed problems that could prevent the database from being updated on 32-bit architectures.*
- *Fixed the behavior of the Onvif advanced configuration panel*
- *Fixed some possible problems that caused the Server to crash.*
- *Fixed the possibility to delete portions of registration for old servers, where the function was not yet entered.*
- *Fixed an error displaying server events: it also incorrectly included auditing events, but these are not events.*



## RELEASE 9.0.0.2061

### **BUGFIX**

- *Fixed crash on Popup Cyclic mode*
- *Improved conversion from old to new DB*
- *Fixed a problem on deleting events from Event Log*
- *Introduced the possibility to export a video from the event log while in the Recording environment*
- *Fixed the insertion of metadata on a video source following the generation of Open Connector events*
- *Improved event search with parameter*
- *Fixed bug on the selection of calendar nodes in the REC environment*
- *Fixed bug on setting / removing privacy in the snapshots streaming*
- *Fixed problems with replaying recordings near a "hole"*
- *Fixed problem with event browsing in the record browser using the Previous Event vs Next Event buttons*
- *Fixed bug on self-deletion of auxiliary path recordings*
- *Correct fps reading for Wisenet cameras*
- *Correct cancellation of events on auxiliary tracks*
- *Fixed bug on registration "holes" in case of file change*





## **RELEASE 9.0.0.1965**

### **MARIA DB**

We switched from Firebird-DB to Maria DB. This will allow for increased possibilities and faster access to events. The conversion of old events and recordings from old versions to the newest one is automatic, upon keeping the same configuration paths. The GUI and usability of the Arteco NEXT software remains the same.

### **AUDITING**

Through Arteco NEXT, administrators are now allowed to “query” the and track the access to events made by other users.

### **MANUAL CANCELLATION OF RECORDINGS AND EVENTS**

Administrators are allowed to delete portions of recordings based on specific time intervals.

As well, administrators are allowed to delete events from the Log Event panel and the DB, permanently.

### **SDK**

During the installation, the wizard allows the user to choose between the 32 or 64bit architecture.

### **CAMERA MANAGEMENT**

Added the ability to change the HTTP and RTSP ports for all camera brands that need these.  
Support for Lumenera brand removed.

### **BUGFIX**

- *Fixed path of the Mobile log*
- *Android APP: at the app launch/startup a page will appear, informing users about the usage of data (in compliancy with the GDPR). To continue using the app you must accept the policy.*