



RELEASE 8.2.5.1923

EXTERNAL I/O: INPUT-OUTPUT ACTUATION DECOUPLING

From now, the change of input state does not force the sending of the commands set on its output. It is possible to re-couple the input and the output through a specific flag.

BUGFIX

- *Fixed an issue that caused failover failures if the DATA and AUX paths of a source resided on the same logical drive.*
- *Fixed a problem with native exportation.*
- *We modified the connector events description on the log, it now no longer display the words "Connector, [0]"*
- *Fixed problems on the storage settings page to prevent a failure on ch quota saving after moving recordings from a disk to another.*
- *Fixed a problem on the connector that caused repeated disconnections of the Arteco Next from the Server. The disconnections were due to the network timeout (~ 30s) caused by excessive time required to process the received XML.*
- *Fixed a bug on using the virtual joystick*

RELEASE 8.2.5.1913

DISK FAILOVER INHIBITION

Through the Arteco NEXT GUI it is now possible to define the behaviour of the recordings in case of slight and reversible errors. It is now possible to decide whether to let the system continue to use the disk/path that gave an error. As an example, this feature becomes useful when recording on a NAS, because this option allows to continue recording on such units without blocking or hijacking the recordings on the failover path in case of a network slowdown.

BUGFIX

- *Fixed crash of Arteco Mobile in case of playback of recordings from APPs or WebAccess.*
- *Removed 15-character limit for authentication through Microsoft domain servers.*
- *Fixed an issue that prevented the deletion of the spare routes.*
- *Fixed the Mjpeg images provided to the mobile APP, now they respect the correct proportions without making cuts and/or stretches.*
- *Fix on the GUI on the native export for Power-User users, now the interface faithfully reports what they can do.*
- *We have added an option that prevents the occurrence of state loops where the CGI (External I / O) command given receives feedback based on which it is updated and does not perform other actions.*

RELEASE 8.2.4.1903

HYPERLINK ON OPEN CONNECTOR

It is now possible to insert clickable hyperlinks in the Open Connector data area. This option has already been used successfully to view or download footage generated by Axis Perimeter Defender event.

BUGFIX



- *Fixed a problem of non-propagation of changes made on remote layouts made while the NEXT clients are not connected to the Servers*
- *It is now possible to update the registration code (Reg-Code) also from the secondary windows of the NEXT client*

RELEASE 8.2.4.1885

LICENSING AND NUMBER OF DEVICES

Modified license file structure to extend the actual limit of 255 peripheral devices and 128 video sources. Now the maximum value for the configurable peripherals is 65535 and 4096 for video sources.

ARTECO MAPS/OPEN CONNECTOR

Now it is possible to open the last event of an Open Connector device by double clicking on the icon in a map.

BUGFIX

- *Fixed error that prevented the correct loading of the information of a server in the "device properties" panel, when opened in a secondary window of Arteco Next.*
- *Fixed a problem with the initial loading of layouts that caused unnecessary bandwidth consumption.*
- *Modified the logic of assignment of storage quotas due to excessive delays during the loading of the setup page. The delay was caused by the slow scan of UNC file systems for the calculation of the space occupied by the recordings. Now there will no longer be an analysis of the free space and the space actually used by the recordings, but only the total disk space will be shown.*
- *Fixed manual selection of External I / O devices in the REC environment*
- *Fixed a problem that occurred on the browser playback bar (REC environment). Under certain conditions, the bar did NOT advance, thus being totally misaligned with respect to the displayed frames and their relative time stamp.*
- *Fixed an issue that led to the Arteco Mobile crash.*
- *Fixed a problem that occurred in case of Drag & Drop on the Device Properties panel (Videowal Matrixl).*

RELEASE 8.2.3.1866

BUGFIX

ARTECO NEXT

- *Fixed a problem on the association between layouts and peripherals*
- *Fixed a problem that prevented the display of connector events in the recording environment*
- *Fixed a problem that prevented the correct loading and "focus" of layouts after the restart of Arteco NEXT*

ARTECO SERVER

- *Corrected a problem related to Live visualization of analogue video channels*

ARTECO MOBILE

- *Solved a problem that could lead to a wrong interpretation of the Daylight Saving Time that caused misalignments in the visualization of recorded video*
- *Now the Apps keep the correct proportions of video streams*



RELEASE 8.2.3.1861

VIDEO SMOOTHING

Some cameras transmit frames at irregular intervals, causing a discontinuous display. We have now made the display of live and recorded videos seamless, for any IP camera. This is possible thanks to many optimizations on the Arteco Server and to the introduction of the "regularization buffers" configurable on ARTECO-NEXT. The "buffering" function can be configured clicking with the right mouse button on the single camera view on the layout. This option introduces greater fluidity by means of a user-adjustable delay from 0 to 2 seconds. in 0,5 second steps.

VIDEOWALL OPTIMIZATIONS

- Layouts are now loaded by the user in each window and no longer imposed by the "load on login" function (at the first start the user will load the layouts from the device tree)
- Layout configurations on the various windows (including the selection of the current layout) will be saved even in case of disconnections or closures of ARTECO NEXT
- We have improved the creation and the closing of secondary windows that now have a special entry in the "File" -> "Close Window" menu. Furthermore, the accidental closing of windows is protected by a clear warning message. We removed the closing cross in the upper right corner for the secondary windows
- We have made it easier and more reliable the creation of new layouts and to assign or move them to different windows.

DECODER SUBSTREAM

It is now possible to modify the internal configuration of the Server in order to manage any type of substream. For example, in the DeviceDB.xml file it is possible to modify the secondary video stream of a Bosch camera so that the H.264 substream is received instead of MJPEG.

INPUT TRIGGERED EVENTS

It is now possible to attach the snapshot of an "input triggered" video event on a mail notification. The "enable email snapshot" option allows for significant savings on server-side CPUs when no snapshot is required.

ADDED NEW SOUNDS FOR EVENT NOTIFICATION

It is now possible to associate a different sound to each type of event, among those available in the menu.

DEWARP

It is now possible to apply the corrected display of "fisheye" lenses to "Generic RTSP" cameras. We have also improved the control experience of this functionality on live and recorded video.

DIGITAL ZOOM

We improved the management of the various digital zoom levels of a camera displayed in a layout.

ARTECO-SDK



We increased our openness to third-party integrations by making the 64-bit version of our Arteco-SDK. Accordingly, it is available the corresponding 64-bit version of the test program in support of the developers.

ARTECO CONSOLE

The new version comes with the Arteco Console 4.3.0.0, which is even more reliable. Now, it is also possible to start / stop services with a double-click.

AXIS DRIVER

The Axis video driver has been updated by removing some calls that no longer work on cameras.

BUGFIX

- *We have strengthened the closing phase of Arteco Server*
- *Side scroll buttons between contiguous maps now work correctly*
- *The Database update during resync and autodelete is more efficient*
- *Video stream parameters of the "Generic RTSP" driver are now displayed correctly*
- *We have restored the CIAS control panels drivers*
- *We have restored the proper functioning of the SMTP server configuration interface for sending E-mail notifications.*
- *The maximum length of a user name has been aligned across all components and is set at 15 characters.*
- *The correct display of the Wanco modules' telemetry data has been restored.*

Client Workstation requirements for ARTECO NEXT

- SO: Windows 10 64 bit updated
- RAM: 8GB or higher
- CPU: i5 or higher

Server Workstation requirements

- RAM: 4GB or higher
- CPU: i3 or higher
- HDD: min 10 GB free space available, min 7200 RPM

64 BIT OS: Windows 10 anniversary update; Windows 8.1; Windows 8; Windows 7 Service Pack 1; Windows Vista Service Pack 2; Windows Server 2016; Windows Server 2012; Windows Server 2008 R2 SP1; Windows Server 2008 Service Pack 2;

32 BIT OS: Windows 10 anniversary update; Windows 8.1; Windows 8; Windows 7 Service Pack 1; Windows Vista Service Pack 2; Windows Server 2012; Windows Server 2008 R2 SP1; Windows Server 2008 Service Pack 2; Windows Server 2003 Service Pack 2; **Windows XP Service Pack 3 (NOTE: this will be the last release compatible with XP, please give wide visibility of this information)**



RELEASE 8.1.4.1799

MULTISELECTION

The possibility of dragging and dropping Peripherals onto the Layout has been implemented. Now, in addition to Cameras, Maps and Webdevices, the Peripherals can now be dragged into the slots of a layout in the Live/Rec environment. The view contains the standard icon associated with the device and its description, the functionalities are similar to those of the icons inserted in a map. You can also change the I/O device icon in layout views.

LINKED LAYOUTS

We have implemented a level of advanced investigation through the functionality of Associate Layout. To allow a user to quickly understand an event in all its details, a data or image is not enough, but specific context information is needed. Linked Layouts responds precisely to these needs and allows to define a dedicated layout for each device. This layout will contain all the context information related to the event. The user can associate a layout with a device (camera, device, server) and can quickly recall it in various ways:

- from the context menu of the device itself
- from the context menu of an event in the log
- from a button in the event properties panel

The association is performed using the dialog for creating a layout, by selecting the devices on the tree to which you want to associate a specific layout.

When a layout with associated devices is selected on the main tree, its devices are listed in the layout properties panel.

OPEN CONNECTOR

Added the "displacement" x and y fields to handle the movement of the OSD information.

Added the font-size field to manage the OSD font size. Now the OSD string also handles the end-of-line.

ACTIVE DIRECTORY

It has been introduced the possibility to perform filtered searches on Active Directory domain groups, so that you can

- ▮ work on a reduced list of groups.

- ▮ manage queries on domain servers where more than 1000 groups and users are configured (1000 is the maximum number of objects that can be returned from an Active Directory query).

INSTANT PLAYER

Changed the default value of the instant player time range from 60 min to 5 min.

FAST FORWARD PLAYBACK

The display of all the recorded frames both forward and backward is extended to 8x. For speeds higher than 8x only key-frames are played. For MJPEG recordings all frames are always played at any speed.

BUGFIX

- *Fixed bug that could cause an Arteco NEXT crash when browsing the pages of domain groups of different servers*



- *Fixed bug on live audio*
- *Adjusted display of colors in case of cameras with H.264 Substream*
- *Fixed metadata positioning problem in video export*
- *Fixed possible crash related to the management of PTZ modules*
- *Correct behavior of the menu-file "close window" of the secondary windows of the next, now behaves like the red "X" in the upper right.*
- *Fixed error that could prevent the correct generation of an event from a Bosch task.*
- *Enabled metadata display for the "Snapshots" live profile.*
- *Fixed problem on the configuration of the Connector that prevented the saving of position and size of the window.*
- *Fixed problem on the display of an empty tab in live profiles in the case of an Onvif video channel with disabled secondary stream.*
- *Fixed crash of the Next in the case of activation of the popup mode followed by a user logout.*
- *Fixed problem in the change password request on the user configuration page.*
- *Fixed problem in the maps related to the incorrect deletion of links to other existing maps.*
- *Corrected system of notification of the pins status of Everywhere used as IO-Devices.*
- *Correction of the restoration of the remote layouts with "Load on Login" has been corrected: they will be repositioned in the window where they were saved. If they were closed or never loaded before, they will be loaded into the main window of the NEXT.*

RELEASE 7.4.2.1781

BUGFIX

- *Fixed the "Input event generation" functionality (Camera Plugin): the Input pins of the Peripherals now enable/disable the generation of correlated camera events correctly.*
- *ONVIF: fixed saving of the "automatic" profile*
- *ONVIF: solved bug that led the secondary to always start as disabled on the secondary channel.*
- *ONVIF: graphic enhancement in the configuration page, now if the Substream is disabled, the tab is no longer shown among the live profiles.*
- *Fixed bug that prevented ONVIF, AXIS and WISENET type channels of being loaded with the correct source default.*
- *Fixed bug in the configuration of the art-mobile when this should be absent.*

RELEASE 7.4.2.1768

BUGFIX

- *Corrected notification of the pins status of EveryWhere if configured as I/O Device.*
- *Fixed the usage of Arteco internal I/O.*
- *Improved loading of remote layouts at server login*
- *Improved management of corrupt or non-existent layouts*
- *Maps: fixed an issue regarding the wrong deletion of links to other maps.*

RELEASE 7.4.2.1764

BUGFIX



- *Implementation of the background parameters: they were saved but loaded only upon a reboot of the Suite.*
- *Update of the status of I / O devices*

RELEASE 7.4.2.1762

BUGFIX

- *Fixed problem on the "events properties" panel. It was cleaned up in case the relative row on the event log was deleted. This became a problem when events were sorted by ascending date (the oldest at the top), because the logging of the log events could result in the bleaching of a newly opened event.*

RELEASE 7.4.2.1759

MULTISELECTION

The Multiselection feature allows to speed up the setup procedures of systems.

In the Setup environment, it is now possible to select multiple elements on the device tree, provided they are of the same type (for example, you can select multiple cameras of the same brand: all Onvif, all Hanwa, all Axis, ... you can not select an Axis and a Hanwha at the same time).

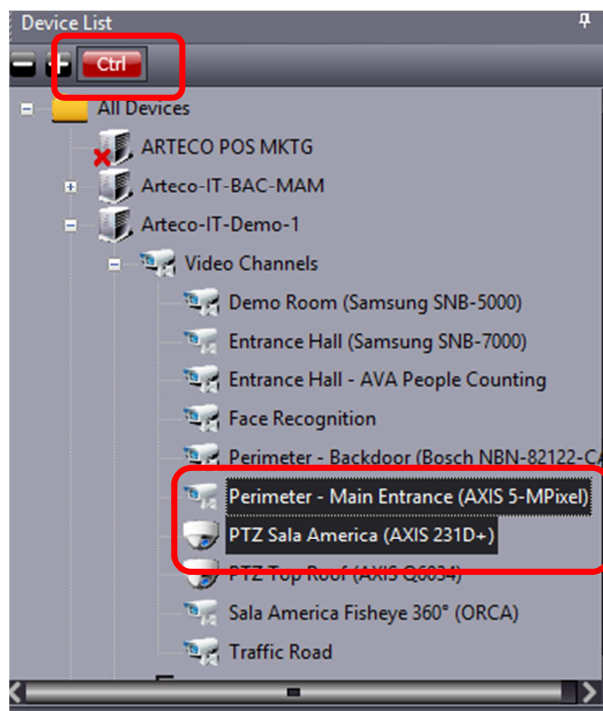
Or you can select multiple devices but they must be of the same type: either all Open Connectors or all External I / O, ... it is not possible to select an Open Connector and an External I / O.

Another interesting news is the ability to select multiple servers at the same time to add or remove a user, if shared between them.

This feature does NOT require updates on the server side, neither on the server version nor on the license.

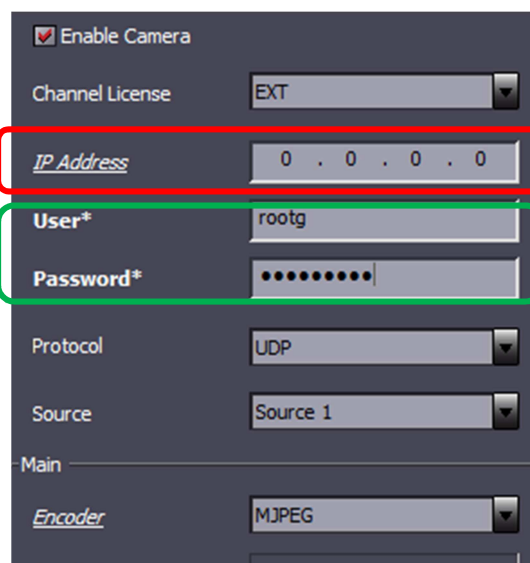
Multiselection is available in two modes:

- **Simple Mode**
In Simple Mode you can select the devices by pressing the CTRL key on the keyboard (each click on a node this is added to the selection) or SHIFT (all the nodes included between the previously selected and the last selected node are selected) keyboard.
- **Toggle mode (CTRL)**
The Toggle Mode (CTRL) will be activated using the button inserted in the "Device List" panel and, if it is active, each selection with the left mouse button will lead to an addition of the device (or to the removal if it was already selected).



Arteco NEXT will behave as follows:

- If the value of a certain field is the same on all selected items, it will be shown.
- If the selected configurations have different values for some attributes, the corresponding fields will show the default value. In this case, to highlight the diversity of the selected elements, the parameter will be highlighted with the italicized and underlined label (eg IP address in the next image).
- To make clear what actually the user has modified in the configuration and then what the NEXT will actually modify if you press the "Apply" button, the relative label will be changed with characters in bold and with an asterisk as a suffix (eg User *).

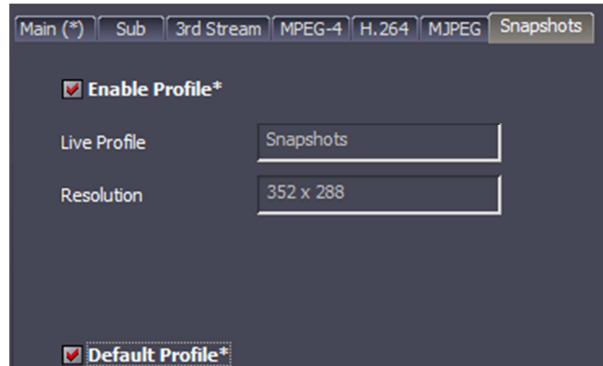


SNAPSHOTS STREAMING LIVE

We implemented a new "Snapshot" live streaming, generated by NEXT's embedded Video analytics, LPR events, and alarming inputs. Users will then have a new live stream, very light in terms of bandwidth but which will highlight the



relevant elements. The streaming is activated by setting the corresponding live profile as the default profile on the or directly on the layout views from the context menu.

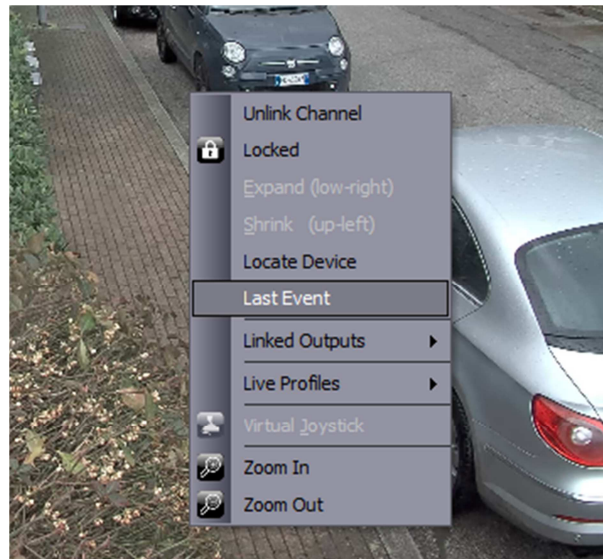


When you drag and drop the video source on the layout, only the last snapshot generated by the video channel will appear.

Important Note: this project also arises from the need to match the Live Snapshots stream to the PopUp functionality. To achieve this behavior, activate the PopUp functionality for the current window and define the "Snapshots" Live profile as "Default Profile": In the case of an event, the video source will open the snapshot of the event that generated the popup.

As for the **Adaptive Resolution**, the Live Snapshots stream will be considered as a low resolution stream, so in case of double click the high resolution stream will start.

It was also added the possibility to "call" the last event of the camera simply by clicking with the right button on the live layout frame: this function will open the event properties panel and show the last event of the device.



BUGFIX

- Fixed saving parameters of the recording on event.



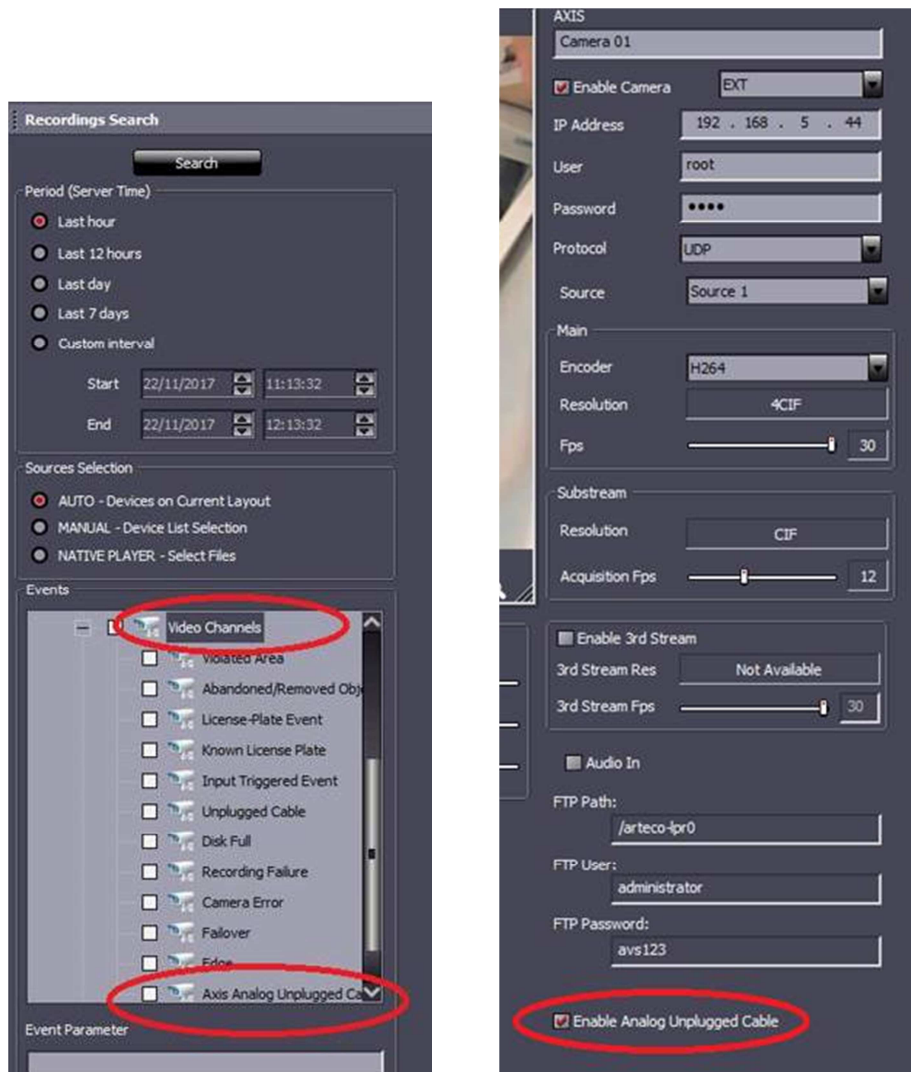
RELEASE 7.4.1.1745

AXIS ENCODER INTEGRATION

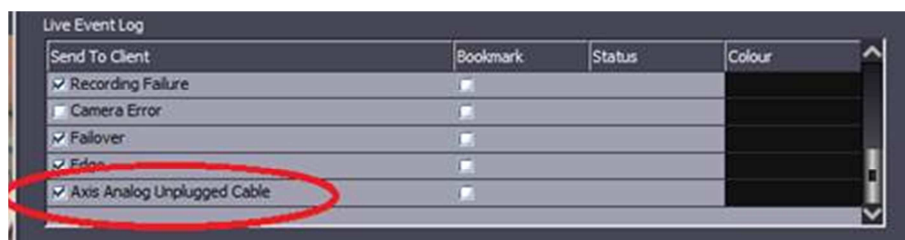
We have integrated proprietary AXIS signaling for "analog" cameras in case of cable disconnection. Now Arteco NEXT detects the status of analog input of the new IP address encoder AXIS M7016.

NEXT users can then discriminate between a loss of network connection between the server and the encoder, or between the encoder and the camera.

We have added a new type of video event called "Axis Analog Unplugged Cable":



Notifications (log, email, sound, output, app) Can be handled from the usual notification management menu.





BUGFIX

- *We optimized the appearance of blinking icons on maps*
- *We corrected the "hardware encoder" management for all analog video channels*
- *Updated MJPEG decoder for AXIS cameras.*
- *Improved ONVIF driver compatibility.*
- *Fixed a NEXT backward compatibility problem with the servers versions below 7.3.6. and 4.0.5*

RELEASE 7.4.0.1725

BOSCH INTEGRATION

We have increased the level of integration on our Bosch camera drivers and new features have been introduced:

1. Integration of Audio In
2. Integration of the I/O embedded modules on the camera as NEXT's "peripheral" device
3. Integration of Bosch embedded Video Analytics (IVA / AVA) TASKs into a dedicated "video source plugin" device called "BOSCH TASK" in the Peripherals devices family.

For this latter feature, you will be able to define which events of Bosch video analysis you wish to receive on Arteco NEXT.

To "tag" recordings with events, you must set up the Device configured as "input triggered event" on the corresponding camera.

WISENET I / O INTEGRATION

Embedded I/O on board of Hanwha's Wisenet X-Series cameras have been integrated as a "WISENET I / O" on Arteco NEXT. It is now possible to manage outputs, monitor input status changes and create link between devices in order to manage sub-systems.

NEW VIDEO DECODING

We have updated the technology of video decoding for compressed video streams. Now the decoding is more robust and the spectrum of compatibility with some brands of cameras has been expanded.

BUGFIX

- *Improved NEXT graphic adaptation to 4K resolution with Win10.*
- *Correct the display of results after queries of video recordings of channels without Auxiliary Recording.*
- *Fixed problem with incomplete removal of a channel with active Auxiliary Recording.*
- *Fixed issue on Calendar daily scheduler.*
- *Fixed video playback issue happening when going from 1x speed to 32x, with active buffering*
- *Fixed 3rd stream configuration problem when not available on camera*
- *Improved aspects of managing Arecont panoramic cameras (Configuring, Searching, and Save in Favorite Groups)*
- *Fixed problem with queries that did not show all the cameras in the recording browser.*
- *Correct the display of unavailable users list with build server prior to build [942]*