



RELEASE 8.1.4.1799

MULTISELECTION

The possibility of dragging and dropping Peripherals onto the Layout has been implemented. Now, in addition to Cameras, Maps and Webdevices, the Peripherals can now be dragged into the slots of a layout in the Live/Rec environment. The view contains the standard icon associated with the device and its description, the functionalities are similar to those of the icons inserted in a map. You can also change the I/O device icon in layout views.

LINKED LAYOUTS

We have implemented a level of advanced investigation through the functionality of Associate Layout. To allow a user to quickly understand an event in all its details, a data or image is not enough, but specific context information is needed. Linked Layouts responds precisely to these needs and allows to define a dedicated layout for each device. This layout will contain all the context information related to the event. The user can associate a layout with a device (camera, device, server) and can quickly recall it in various ways:

- from the context menu of the device itself
- from the context menu of an event in the log
- from a button in the event properties panel

The association is performed using the dialog for creating a layout, by selecting the devices on the tree to which you want to associate a specific layout.

When a layout with associated devices is selected on the main tree, its devices are listed in the layout properties panel.

OPEN CONNECTOR

Added the "displacement" x and y fields to handle the movement of the OSD information.

Added the font-size field to manage the OSD font size. Now the OSD string also handles the end-of-line.

ACTIVE DIRECTORY

It has been introduced the possibility to perform filtered searches on Active Directory domain groups, so that you can

- work on a reduced list of groups.

- manage queries on domain servers where more than 1000 groups and users are configured (1000 is the maximum number of objects that can be returned from an Active Directory query).

INSTANT PLAYER

Changed the default value of the instant player time range from 60 min to 5 min.

FAST FORWARD PLAYBACK

The display of all the recorded frames both forward and backward is extended to 8x. For speeds higher than 8x only key-frames are played. For MJPEG recordings all frames are always played at any speed.

BUGFIX

- *Fixed bug that could cause an Arteco NEXT crash when browsing the pages of domain groups of different servers*
- *Fixed bug on live audio*
- *Adjusted display of colors in case of cameras with H.264 Substream*



- *Fixed metadata positioning problem in video export*
- *Fixed possible crash related to the management of PTZ modules*
- *Correct behavior of the menu-file "close window" of the secondary windows of the next, now behaves like the red "X" in the upper right.*
- *Fixed error that could prevent the correct generation of an event from a Bosch task.*
- *Enabled metadata display for the "Snapshots" live profile.*
- *Fixed problem on the configuration of the Connector that prevented the saving of position and size of the window.*
- *Fixed problem on the display of an empty tab in live profiles in the case of an Onvif video channel with disabled secondary stream.*
- *Fixed crash of the Next in the case of activation of the popup mode followed by a user logout.*
- *Fixed problem in the change password request on the user configuration page.*
- *Fixed problem in the maps related to the incorrect deletion of links to other existing maps.*
- *Corrected system of notification of the pins status of Everywhere used as IO-Devices.*
- *Correction of the restoration of the remote layouts with "Load on Login" has been corrected: they will be repositioned in the window where they were saved. If they were closed or never loaded before, they will be loaded into the main window of the NEXT.*

RELEASE 7.4.2.1781

BUGFIX

- *Fixed the "Input event generation" functionality (Camera Plugin): the Input pins of the Peripherals now enable/disable the generation of correlated camera events correctly.*
- *ONVIF: fixed saving of the "automatic" profile*
- *ONVIF: solved bug that led the secondary to always start as disabled on the secondary channel.*
- *ONVIF: graphic enhancement in the configuration page, now if the Substream is disabled, the tab is no longer shown among the live profiles.*
- *Fixed bug that prevented ONVIF, AXIS and WISENET type channels of being loaded with the correct source default.*
- *Fixed bug in the configuration of the art-mobile when this should be absent.*

RELEASE 7.4.2.1768

BUGFIX

- *Corrected notification of the pins status of EveryWhere if configured as I/O Device.*
- *Fixed the usage of Arteco internal I/O.*
- *Improved loading of remote layouts at server login*
- *Improved management of corrupt or non-existent layouts*
- *Maps: fixed an issue regarding the wrong deletion of links to other maps.*

RELEASE 7.4.2.1764

BUGFIX

- *Implementation of the background parameters: they were saved but loaded only upon a reboot of the Suite.*
- *Update of the status of I / O devices*



RELEASE 7.4.2.1762

BUGFIX

- *Fixed problem on the "events properties" panel. It was cleaned up in case the relative row on the event log was deleted. This became a problem when events were sorted by ascending date (the oldest at the top), because the logging of the log events could result in the bleaching of a newly opened event.*

RELEASE 7.4.2.1759

MULTISELECTION

The Multiselection feature allows to speed up the setup procedures of systems.

In the Setup environment, it is now possible to select multiple elements on the device tree, provided they are of the same type (for example, you can select multiple cameras of the same brand: all Onvif, all Hanwa, all Axis, ... you can not select an Axis and a Hanwha at the same time).

Or you can select multiple devices but they must be of the same type: either all Open Connectors or all External I / O, ... it is not possible to select an Open Connector and an External I / O.

Another interesting news is the ability to select multiple servers at the same time to add or remove a user, if shared between them.

This feature does NOT require updates on the server side, neither on the server version nor on the license.

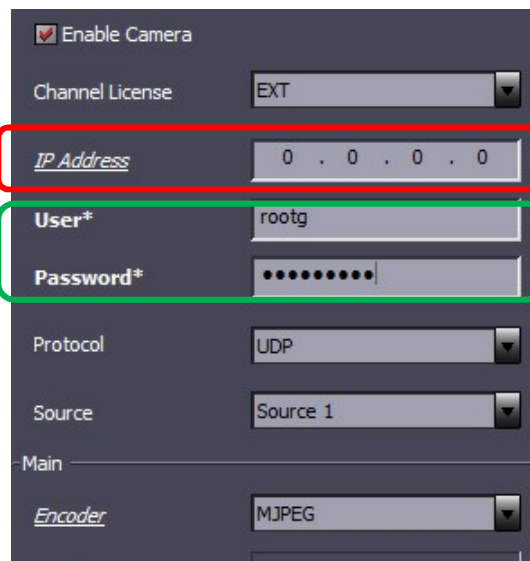
Multiselection is available in two modes:

- **Simple Mode**
In Simple Mode you can select the devices by pressing the CTRL key on the keyboard (each click on a node this is added to the selection) or SHIFT (all the nodes included between the previously selected and the last selected node are selected) keyboard.
- **Toggle mode (CTRL)**
The Toggle Mode (CTRL) will be activated using the button inserted in the "Device List" panel and, if it is active, each selection with the left mouse button will lead to an addition of the device (or to the removal if it was already selected).



Arteco NEXT will behave as follows:

- If the value of a certain field is the same on all selected items, it will be shown.
- If the selected configurations have different values for some attributes, the corresponding fields will show the default value. In this case, to highlight the diversity of the selected elements, the parameter will be highlighted with the italicized and underlined label (eg IP address in the next image).
- To make clear what actually the user has modified in the configuration and then what the NEXT will actually modify if you press the "Apply" button, the relative label will be changed with characters in bold and with an asterisk as a suffix (eg User *).





SNAPSHOTS STREAMING LIVE

We implemented a new "Snapshot" live streaming, generated by NEXT's embedded Video analytics, LPR events, and alarming inputs. Users will then have a new live stream, very light in terms of bandwidth but which will highlight the relevant elements. The streaming is activated by setting the corresponding live profile as the default profile on the or directly on the layout views from the context menu.



When you drag and drop the video source on the layout, only the last snapshot generated by the video channel will appear.

Important Note: this project also arises from the need to match the Live Snapshots stream to the PopUp functionality. To achieve this behavior, activate the PopUp functionality for the current window and define the "Snapshots" Live profile as "Default Profile": In the case of an event, the video source will open the snapshot of the event that generated the popup.

As for the **Adaptive Resolution**, the Live Snapshots stream will be considered as a low resolution stream, so in case of double click the high resolution stream will start.

It was also added the possibility to "call" the last event of the camera simply by clicking with the right button on the live layout frame: this function will open the event properties panel and show the last event of the device.



BUGFIX

- Fixed saving parameters of the recording on event.



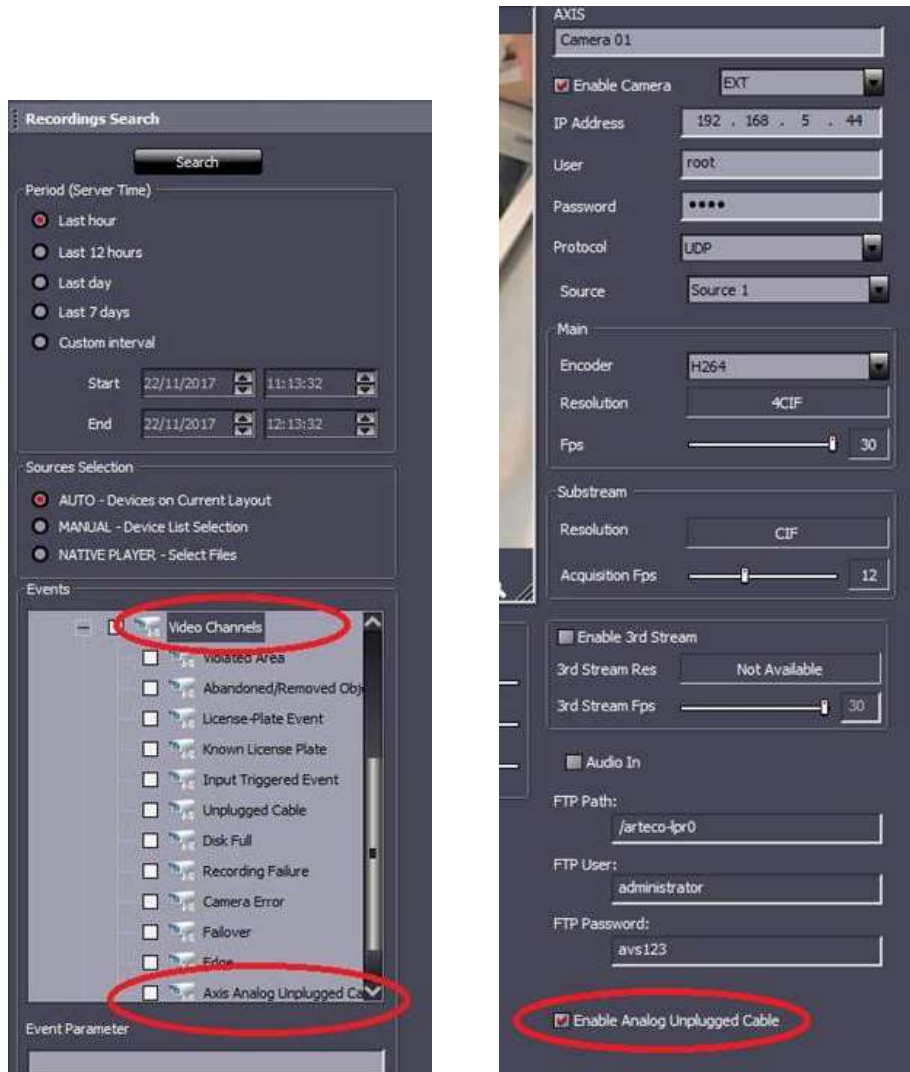
RELEASE 7.4.1.1745

AXIS ENCODER INTEGRATION

We have integrated proprietary AXIS signaling for "analog" cameras in case of cable disconnection. Now Arteco NEXT detects the status of analog input of the new IP address encoder AXIS M7016.

NEXT users can then discriminate between a loss of network connection between the server and the encoder, or between the encoder and the camera.

We have added a new type of video event called "Axis Analog Unplugged Cable":



Notifications (log, email, sound, output, app ...) Can be handled from the usual notification management menu.





BUGFIX

- *We optimized the appearance of blinking icons on maps*
- *We corrected the "hardware encoder" management for all analog video channels*
- *Updated MJPEG decoder for AXIS cameras.*
- *Improved ONVIF driver compatibility.*
- *Fixed a NEXT backward compatibility problem with the servers versions below 7.3.6. and 4.0.5*

RELEASE 7.4.0.1725

BOSCH INTEGRATION

We have increased the level of integration on our Bosch camera drivers and new features have been introduced:

1. Integration of Audio In
2. Integration of the I/O embedded modules on the camera as NEXT's "peripheral" device
3. Integration of Bosch embedded Video Analytics (IVA / AVA) TASKs into a dedicated "video source plugin" device called "BOSCH TASK" in the Peripherals devices family.

For this latter feature, you will be able to define which events of Bosch video analysis you wish to receive on Arteco NEXT.

To "tag" recordings with events, you must set up the Device configured as "input triggered event" on the corresponding camera.

WISENET I / O INTEGRATION

Embedded I/O on board of Hanwha's Wisenet X-Series cameras have been integrated as a "WISENET I / O" on Arteco NEXT. It is now possible to manage outputs, monitor input status changes and create link between devices in order to manage sub-systems.

NEW VIDEO DECODING

We have updated the technology of video decoding for compressed video streams. Now the decoding is more robust and the spectrum of compatibility with some brands of cameras has been expanded.

BUGFIX

- *Improved NEXT graphic adaptation to 4K resolution with Win10.*
- *Correct the display of results after queries of video recordings of channels without Auxiliary Recording.*
- *Fixed problem with incomplete removal of a channel with active Auxiliary Recording.*
- *Fixed issue on Calendar daily scheduler.*
- *Fixed video playback issue happening when going from 1x speed to 32x, with active buffering*
- *Fixed 3rd stream configuration problem when not available on camera*
- *Improved aspects of managing Arecont panoramic cameras (Configuring, Searching, and Save in Favorite Groups)*
- *Fixed problem with queries that did not show all the cameras in the recording browser.*
- *Correct the display of unavailable users list with build server prior to build [942]*