



FEATURES

ARTECO NEXT - VIDEOWALL and REMOTE LAYOUTS (PRIVATE and SHARED)

The VIDEOWALL function allows you to control the display of cameras from one NEXT to another NEXT. This way an Operator can decide from his NEXT what devices to show on the Monitors of the Control Room, using another NEXT.

Remote display activation occurs by dragging the device from its tree menu to the "Virtual Matrix". This is viewable through the new "branch" in the device tree, called "Layout", which will allow the operator to view shared layouts and manage the virtual array through the "device properties" panel of Arteco NEXT.

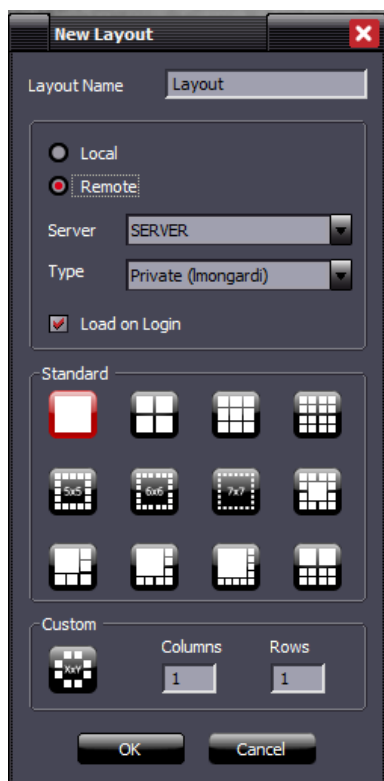
This Virtual Matrix replicates the actual layout so you can drag the elements as in the layout itself. In addition, this pattern is "blind", which means that it does not display images and therefore does not generate traffic data as it only serves to control and drag and drop cameras on its layout.

With the VIDEOWALL function, "Remote" layouts were created.

The remote layout, once created, will then be saved on the Server (as well as on the client PC), so it can be recalled by another Arteco NEXT connected to the same system.

Remote layouts can be of two types:

- "Private": when the same user can work with the same layouts even from different locations, without having to recreate or update it every time, replicating the layout on various NEXTs.
- "Shared": When the user offers other operators the ability to use and edit layouts that he creates.



The new Layout creation panel is now expanded to include all the following:

Local: Classic Layout, saved only on the PC-Client

Remote: Layout also saved on Server, which can be managed from a remote location

Server: Select the appropriate Remote server

Type (Private or Shared), see above

Load on Login: If selected, you can configure a layout to be automatically uploaded at user login.

Audio management is allowed, you can "interact" with the device audio only if it is in the "active" layout.

Except for creating "private" remote layouts, **the features just described require a specific license.**

This license must be enabled on each server on which the features are needed.



ARTECO NEXT - EXPORTATION

By default Arteco NEXT will now export in ".MP4 with Metadata" format, which is almost 3x faster compared to previous versions. It is no longer possible to export in .AVI format.

Additionally, it is now possible to save files larger than 2GB.

BUGFIX

- Corrected a problem that prevented the server from starting properly after installing Windows automatic updates.
- Fixed a bug that periodically disconnected some types of rtsp cameras following an attempt to renew an rtsp session.
- Fixed the webdesign context menu on layouts.
- Updated User role management to enable full screen functions and layout move. Now manageable via the "LayoutControl".
- Updated User role management for dragging a layout into the layouts area. Now manageable via the "LayoutControl".

REQUIREMENTS

PC Client - ARTECO NEXT

OS: Windows 10 64 bit updated

RAM: 8GB

CPU: Intel i5 or higher

Server Workstation – ARTECO SUITE

RAM: 4GB

CPU: Intel i3 or higher

HDD: min 10GB available space, min speed 7200 RPM

OS 64 BIT

Windows 10 anniversary update; Windows 8.1; Windows 8; Windows 7 Service Pack 1; Windows Vista Service Pack 2; Windows Server 2016; Windows Server 2012; Windows Server 2008 R2 SP1; Windows Server 2008 Service Pack 2;

OS 32 BIT

Windows 10 anniversary update; Windows 8.1; Windows 8; Windows 7 Service Pack 1; Windows Vista Service Pack 2; Windows Server 2012; Windows Server 2008 R2 SP1; Windows Server 2008 Service Pack 2; Windows Server 2003 Service Pack 2; Windows XP Service Pack 3