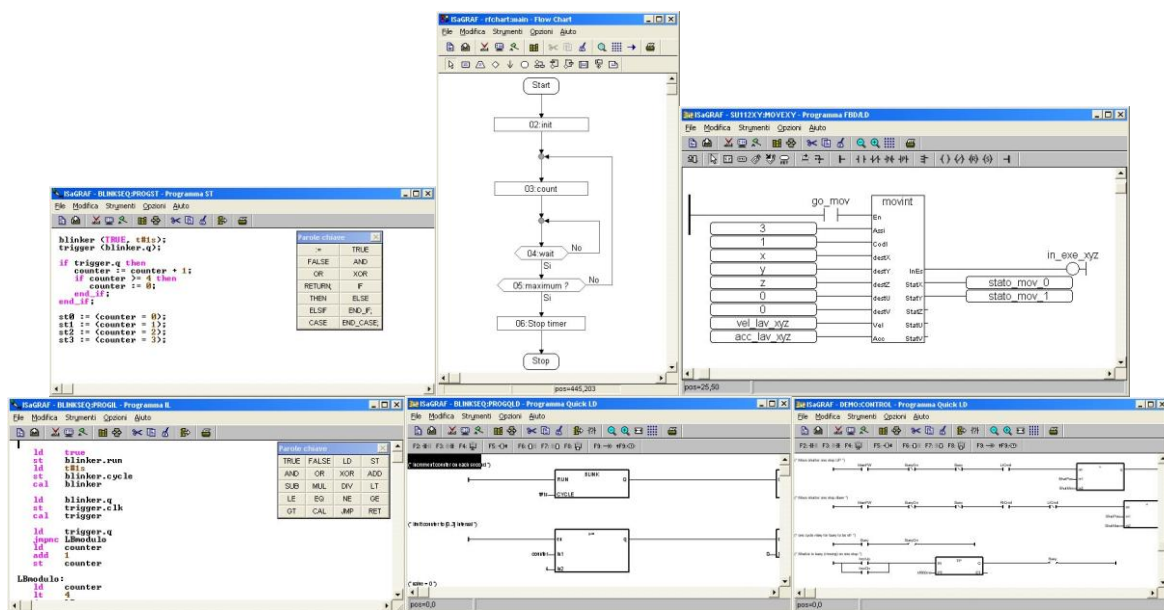


arteco

motion control technologies

ISaGRAF® development software



The ISaGRAF® development package enables PLC and axis control programming in compliance with IEC61131-3.

The standard PLC functions are integrated by Artec's library for the control of motorized axes and additional functions.

The standard IEC61131 programming languages allow the programmer to develop the program of the machine in a very simple and fast way.

The programmer can utilize all the available programming languages for the same project. The SFC language allows to develop sequential routines easily, without the need to manage complicated machine states. FBD or QLD programming languages allow to develop PLC programs for I/O and for other peripherals management.

CHARACTERISTICS	DESCRIPTION	NOTES
PLATFORM		
Windows	95 / 98 / 98SE / 2000 / ME / XP	Windows NT for tele-assistance. 98SE or later version suggested.
USABLE LANGUAGES		
IEC61131-3 standard	SFC – Sequential Function Chart FBD – Function Block Diagram LD – Ladder Diagram ST – Structured Text IL – Instruction List FC – Flow Chart	Sequential flow chart Function block diagram Language and contacts Structured text (similar to Pascal) Instruction list Flow chart
Debugger	Simulated and On Line Graphic Complete	Simulation is not allowed for axis control and Arteco custom features
Programming manual	PDF file format	Included on the CD-ROM. Printed version available on request.
LIMITS		
ISaGRAF® WD2		
N° of program variables	256	
N° of I/O variables	32	
ISaGRAF® WD8		
N° of program variables	Unlimited	
N° of I/O variables	128	
ISaGRAF® WD16		
N° of program variables	Unlimited	
N° of I/O variables	256	

ARTECO MOTION TECH reserves the right to change the physical hardware and or software specifications without notice

Version 20100203

