


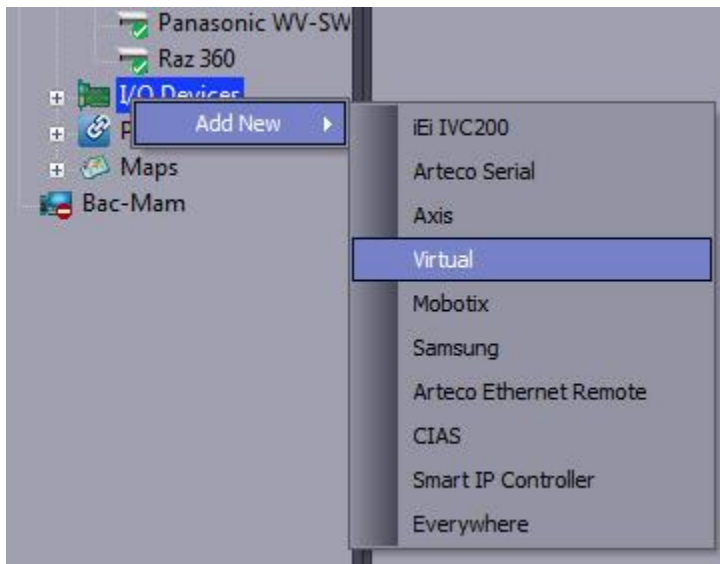
HOW TO MAKE A PTZ MOVE TO A DESIRED LOCATION WHEN A ZONE FROM ANOTHER CAMERA IS ACTIVATED.

Ver. 4.0.1

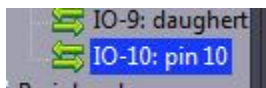
DESCRIPTION: This Tech tip is to instruct the user on how to make a PTZ camera move to a desired location when a zone from another camera is activated. This will be accomplished by using a virtual I/O and no additional hardware is required.

IMPORTANT: This Tech Tip applies to ARTECO Server with ARTECO LOGIC NEXT only and is not intended or advised to be used with any other version of ARTECO Server.

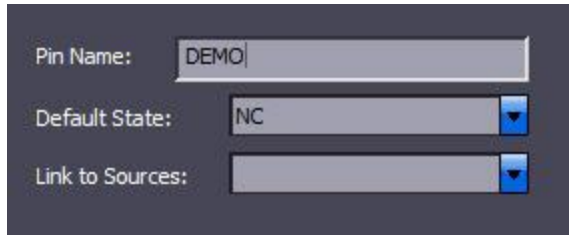
1. Log into ARTECO LOGIC NEXT with an administrator account and click on the . This will bring you into the configuration environment.
2. Next RIGHT click on "I/O Devices" and select "Add New"-> "Virtual". As seen below.



3. Select the first available Pin, in this example we are using "IO-10: pin 10"




4. Create a desired name that gives an accurate description of your intent.

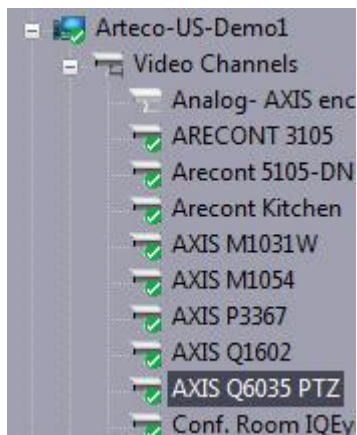


Pin Name:

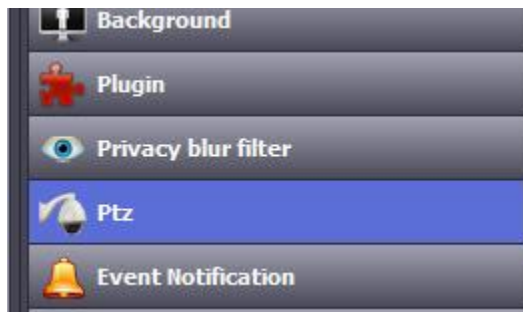
Default State:

Link to Sources:

5. Click  before you move off of this page.
6. Now select the PTZ camera you would like to use for movement. In this example we are using an AXIS Q6035 as seen below.



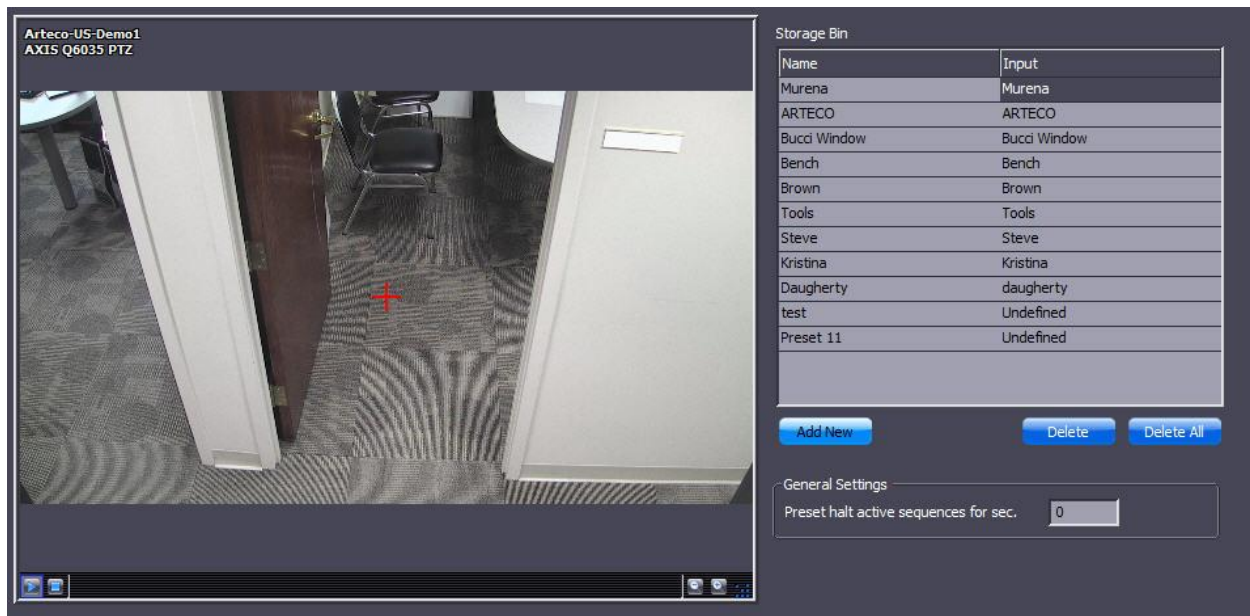
7. Click on "PTZ" to the right of the Device list.



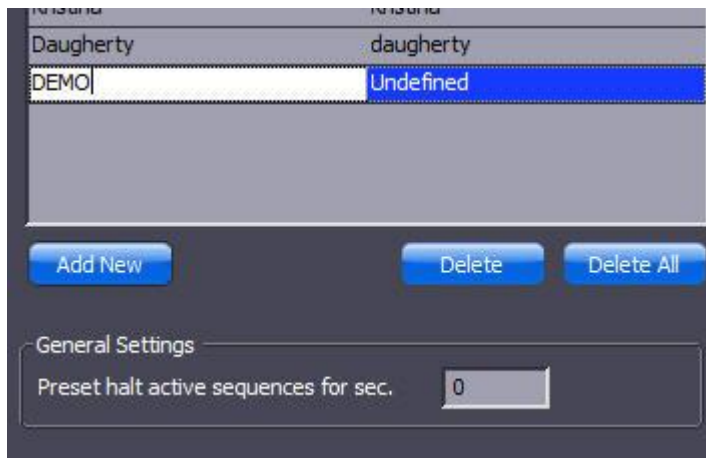
- Then click on "Presets" in the PTZ menu.



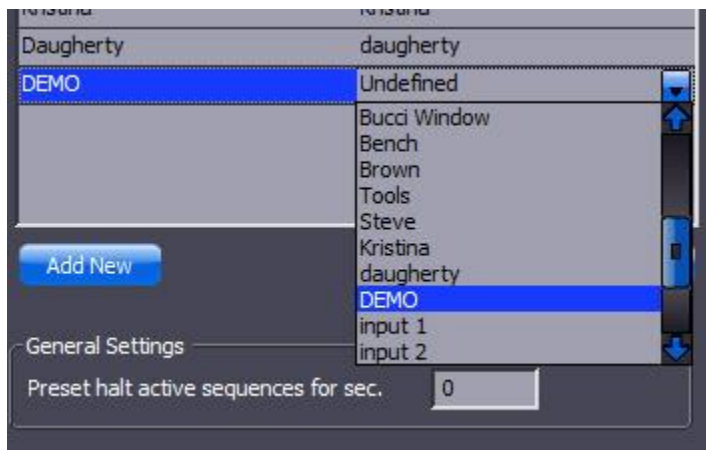
- Arrange the camera to a location you would like to see when a Zone is activated. Then click "Add New"



10. Name the Preset the same name you used for the Pin in step 4.

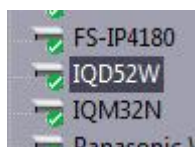


11. Next under "Input" select the pin you created.



12. Click **Apply** before you leave this page.

13. Next in the device list, click on the camera with the zone intended to trigger the PTZ movement.

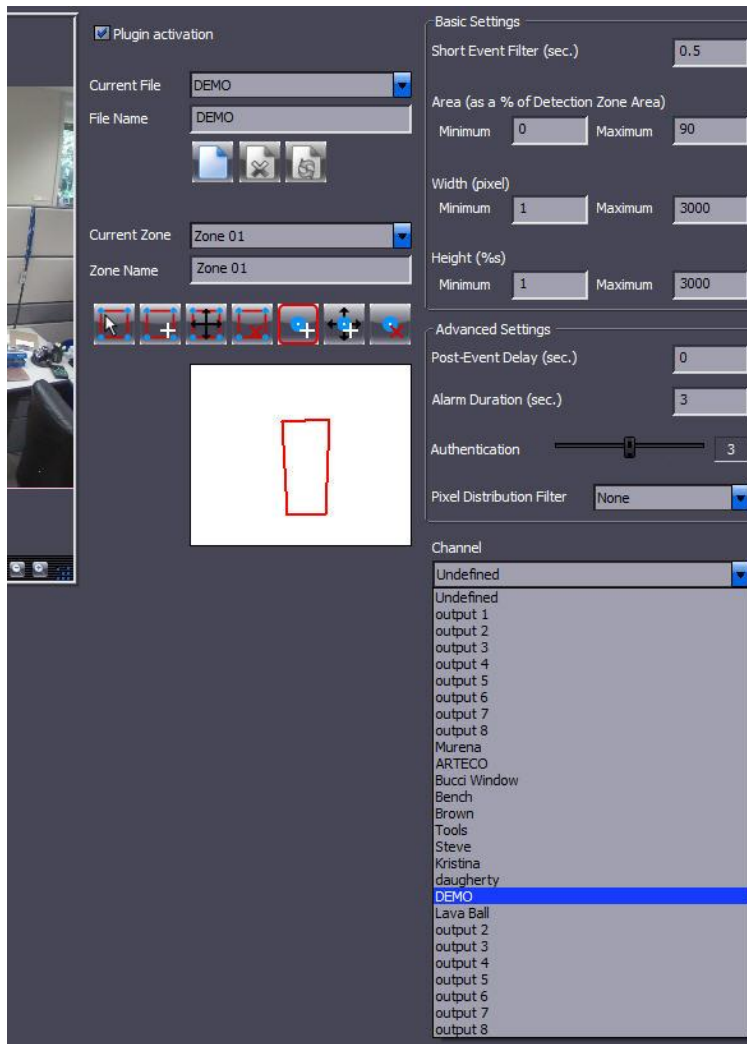



14. Click on plugin.



15. Select the Zone you would like to use as an activation trigger.

16. Under "channel" select the IO pin you created in step 4.



17. Click  to complete the process.